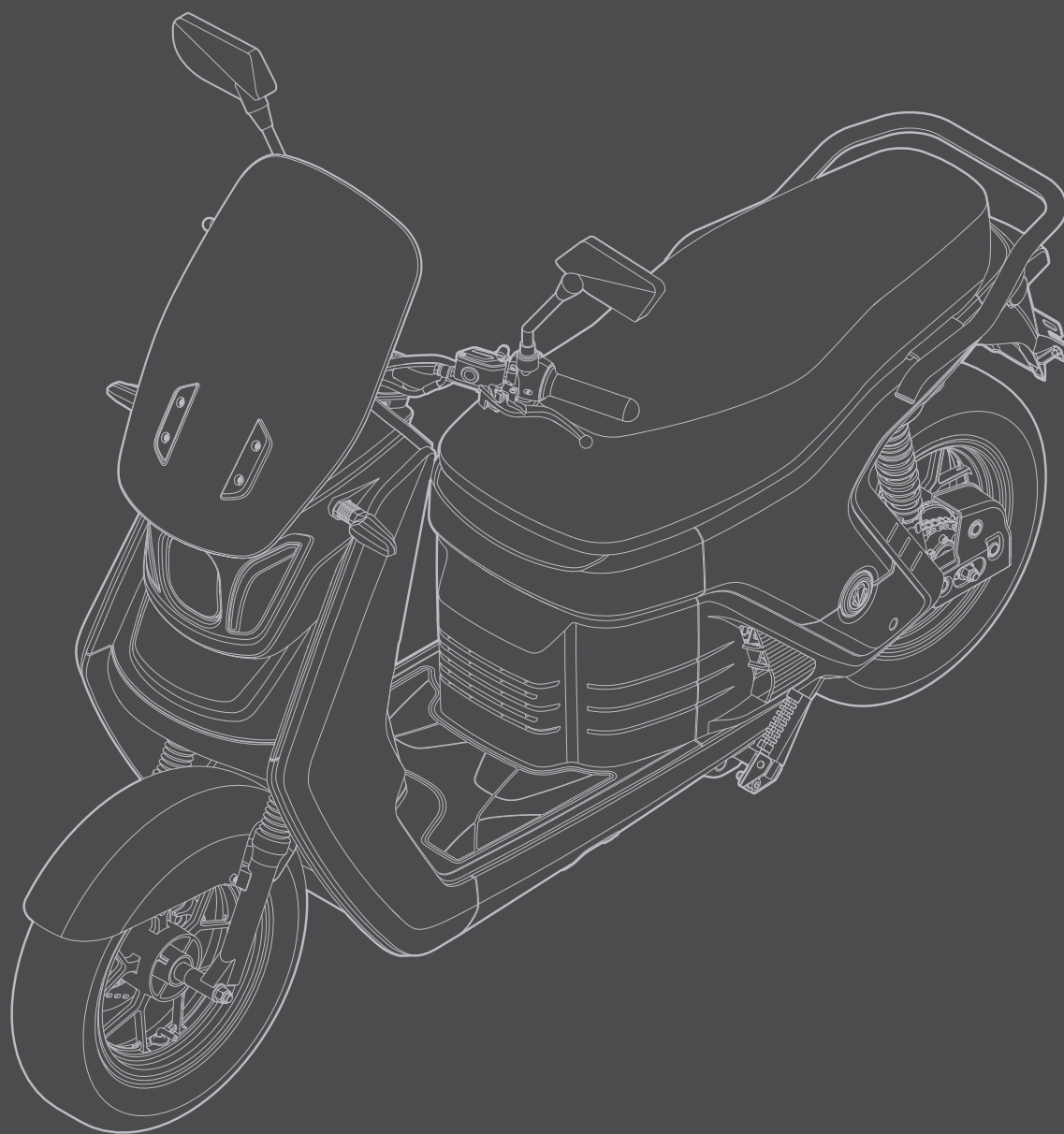




SONGUO

NEUWAI S1

Part Book



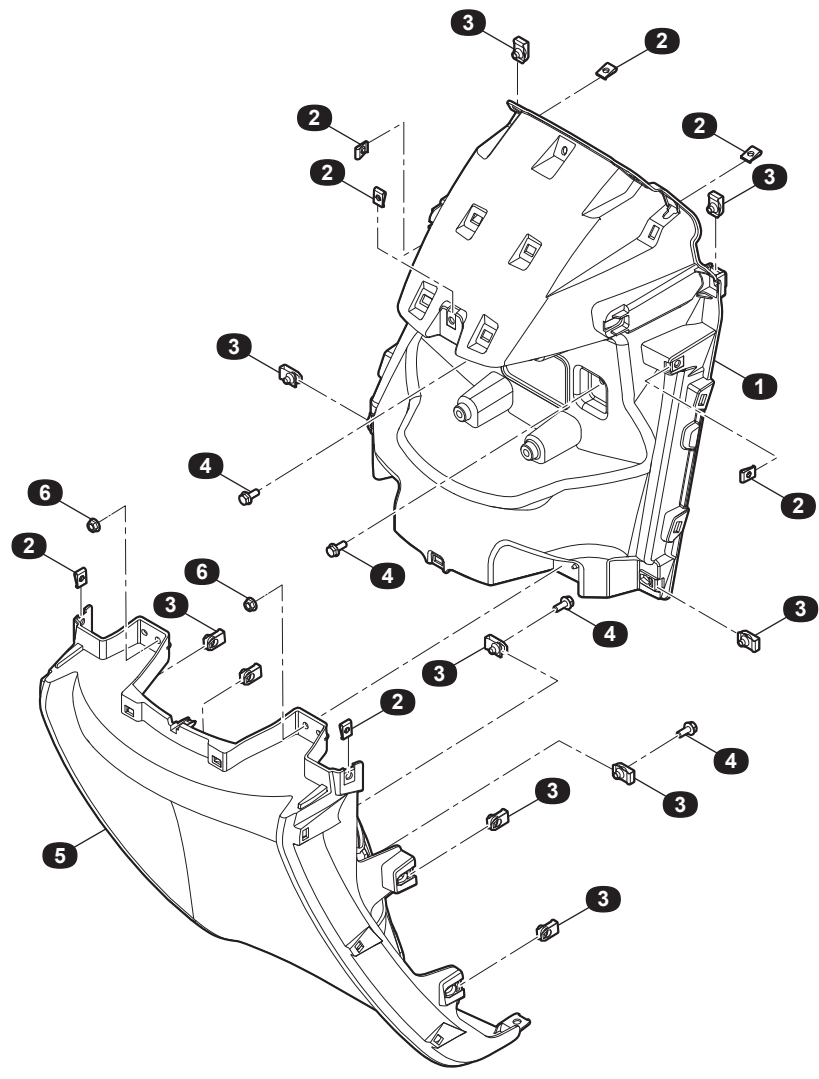
NEUWAI

목차

EXTERIOR	4	ELECTRIC ASSY	56
REINF ASSY-HEAD LAMP	4	ELECTRIC ASSY	56
COVER ASSY-HEAD LAMP	6		
COVER ASSY-FLOOR	8	EPT DATA	58
COVER ASSY-MAIN FASCIA,LH/RH	10	EPT DATA	58
COVER ASSY-MAIN FASCIA,CTR	12		
MODULE ASSY-RR END	14		
GUARD-FR RR WHEEL	16		
MOLDING ASSY-FENDER FLOOR	18		
COVER ASSY-CTR UNDER	20		
COVER ASSY-TRAY BOX (STD)	22		
SEAT ASSY-COMPL	24		
PLATFORM	26		
MAIN BODY	26		
CHASSIS	28		
FR SHOCK ASSY	28		
FR AL WHEEL SUB ASSY	30		
FR SHOCK SUB ASSY	32		
HANDLE BAR SUB ASSY	34		
RR WHEEL ASSY	36		
RR WHEEL DISC SUB ASSY	38		
RR AL WHEEL SUB ASSY	40		
RR SPROCKET SUB ASSY	42		
SIDE STAND	44		
MAIN STAND ASSY	46		
RR SUSPENSION	48		
BRAKE CABLE	50		
SWING ARM ASSY	52		
CHAIN ASSY(15T_27T)	54		

EXTERIOR

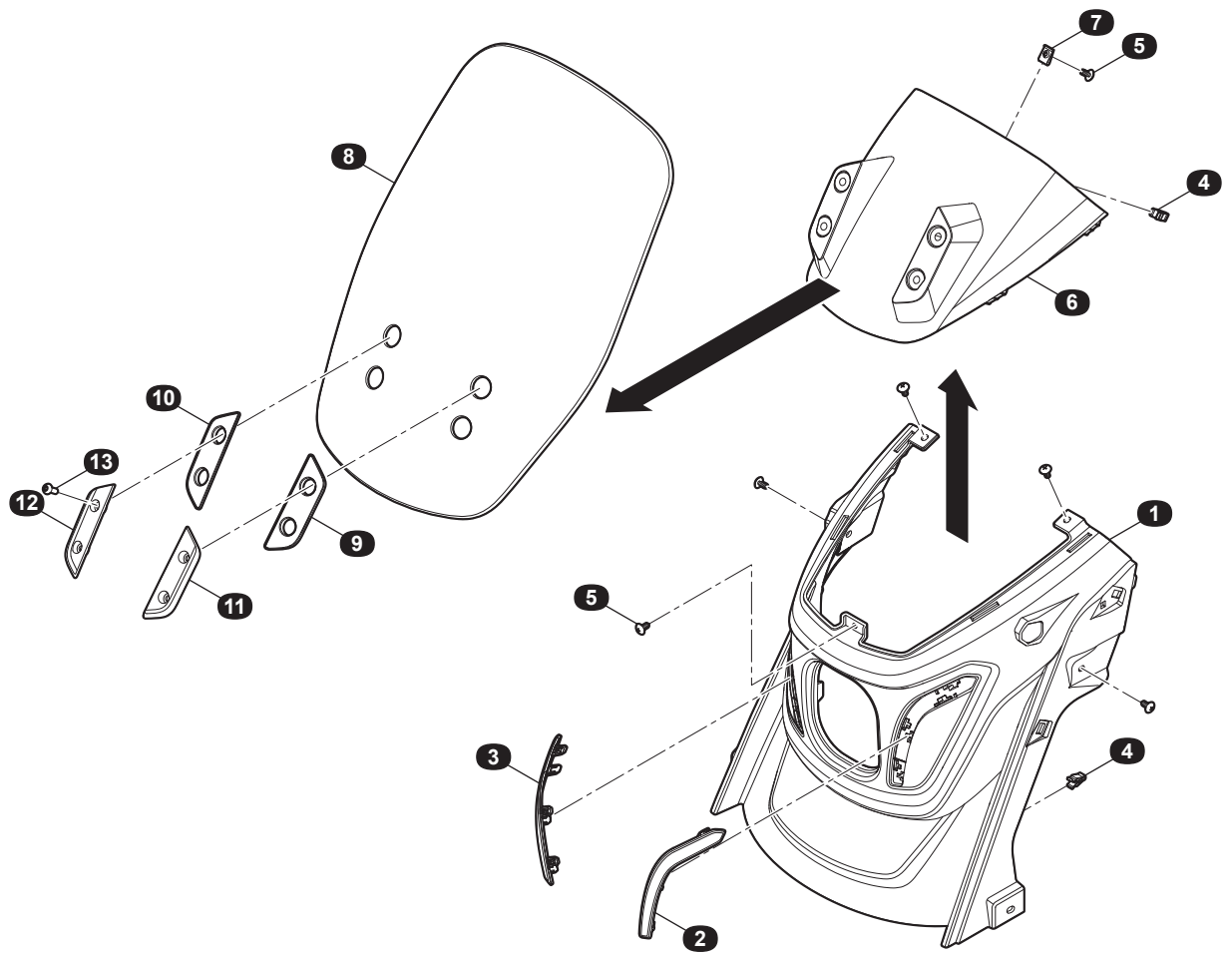
REINF ASSY-HEAD LAMP



NO	PART NO.	PART NAME (Kr)	PART NAME (En)	Qt'y	REMARKS
1	2A72111000	레인프-헤드 램프	REINF-HEAD LAMP	1	
2	S311050000	U-너트 (Ø5 탭핑 스크류)	U-NUT (Ø5 TAPPING SCREW)	5	
3	Q31206F61B	U-너트 (M6 볼트)	U-NUT (M6 BOLT)	10	
4	Q1820616TF62	헥사곤 플랜지 볼트 (M6X16)	BOLT-HEXAGON FLANGE (M6X16)	4	
5	2A72121000	FR 휠더 커버	COVER-FR FENDER	1	
6	Q32006T14F62	헥사곤 플랜지 너트 (M6)	NUT-HEXAGON FLANGE (M6)	2	

EXTERIOR

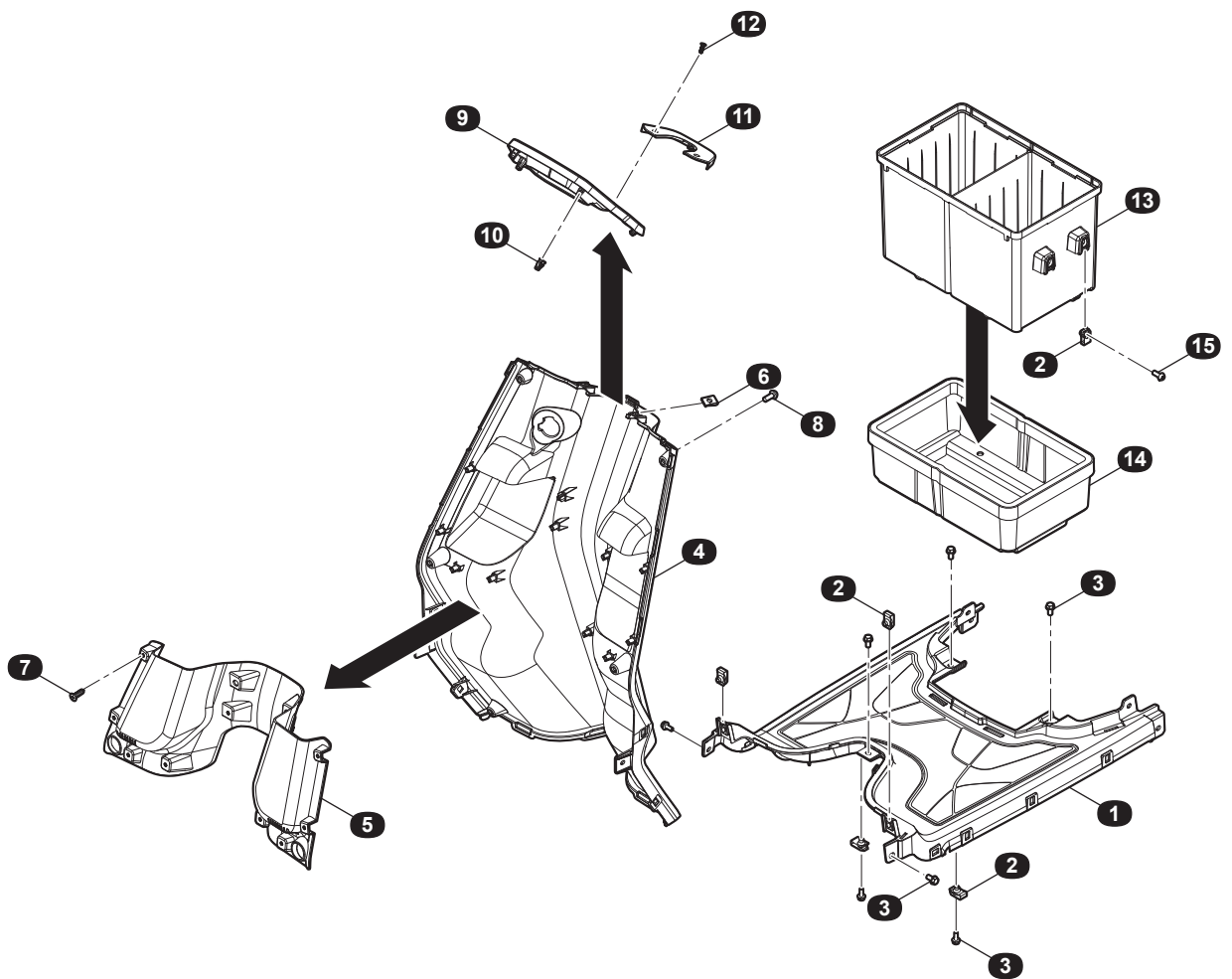
COVER ASSY-HEAD LAMP



NO	PART NO.	PART NAME (Kr)	PART NAME (En)	Qt'y	REMARKS
1	2A72131000	커버 헤드 램프,메인	COVER HEAD LAMP,MAIN	1	
2	2A72132000IV	몰딩-헤드 램프,LH 아이보리	MOLDING-HEAD LAMP,LH IVORY	1	
	2A72132000YL	몰딩-헤드 램프,LH 옐로우	MOLDING-HEAD LAMP,LH YELLOW	1	
	2A72132000RD	몰딩-헤드 램프,LH 레드	MOLDING-HEAD LAMP,LH RED	1	
3	2A72133000IV	몰딩-헤드 램프,RH 아이보리	MOLDING-HEAD LAMP,RH IVORY	1	
	2A72133000YL	몰딩-헤드 램프,RH 옐로우	MOLDING-HEAD LAMP,RH YELLOW	1	
	2A72133000RD	몰딩-헤드 램프,RH 레드	MOLDING-HEAD LAMP,RH RED	1	
4	S621150080	클립-A	CLIP-A	6	
5	Q2734813F62	탭핑 스크류 (ST4.8X13L)	TAPPING SCREW (ST4.8X13L)	8	
6	2A72141000	커버-헤드 램프,UPR	COVER-HEAD LAMP,UPR	1	
7	S311050000	U-너트 (Ø5 탭핑 스크류)	U-NUT (Ø5 TAPPING SCREW)	2	
8	2A73111000	커버-윈드실드	COVER-WINDSHIELD	1	
9	2A73112000	윈드실드 씰,LH	SEAL-WINDSHIELD,LH	1	
10	2A73113000	윈드실드 씰,RH	SEAL-WINDSHIELD,RH	1	
11	2A73120000	윈드실드 캡,LH	CAP-WINDSHILED,LH	1	
12	2A73130000	윈드실드 캡,RH	CAP-WINDSHILED,RH	1	
13	Q215B0616T1F31	톡스 볼트 (M6X16)	BOLT-TORX (M6X16)	4	

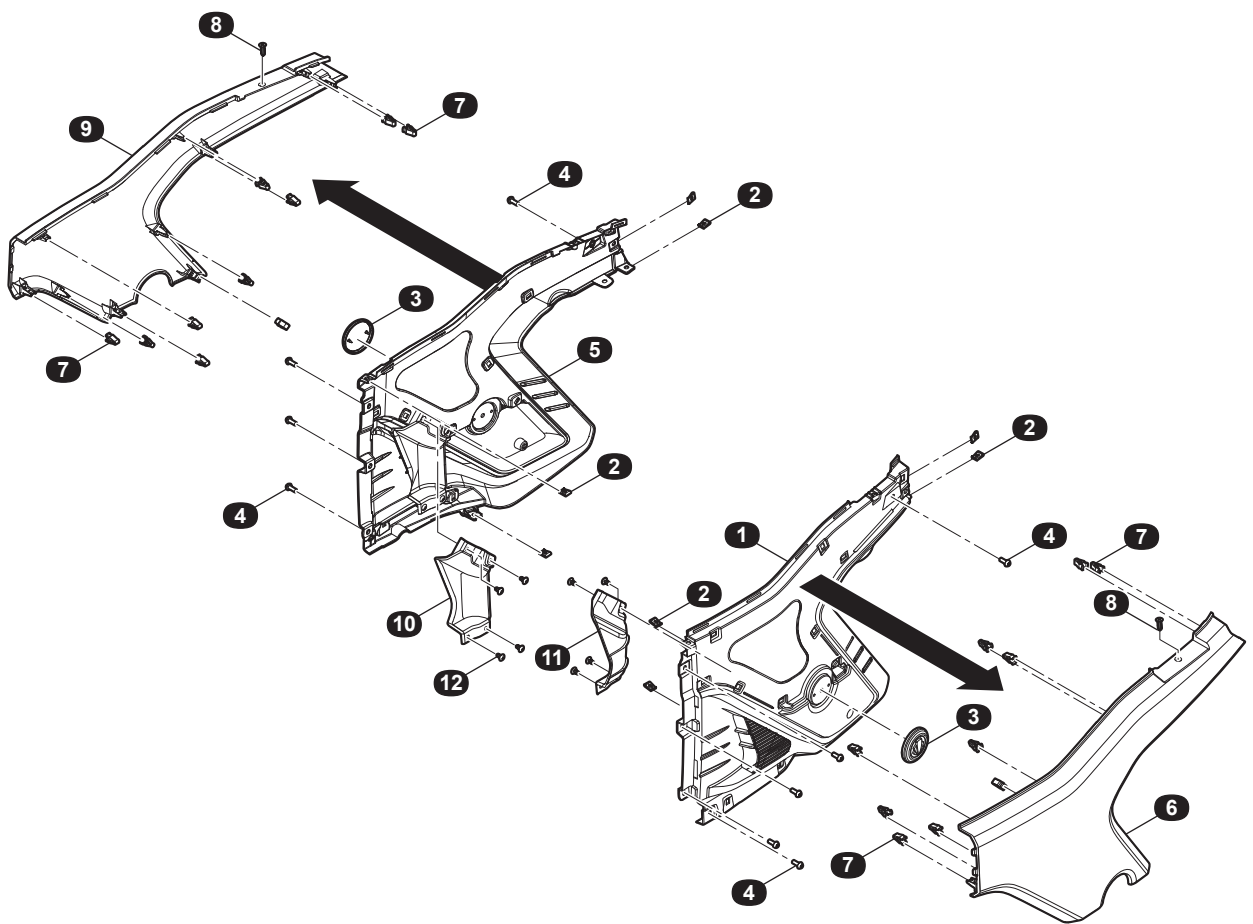
EXTERIOR

COVER ASSY-FLOOR



EXTERIOR

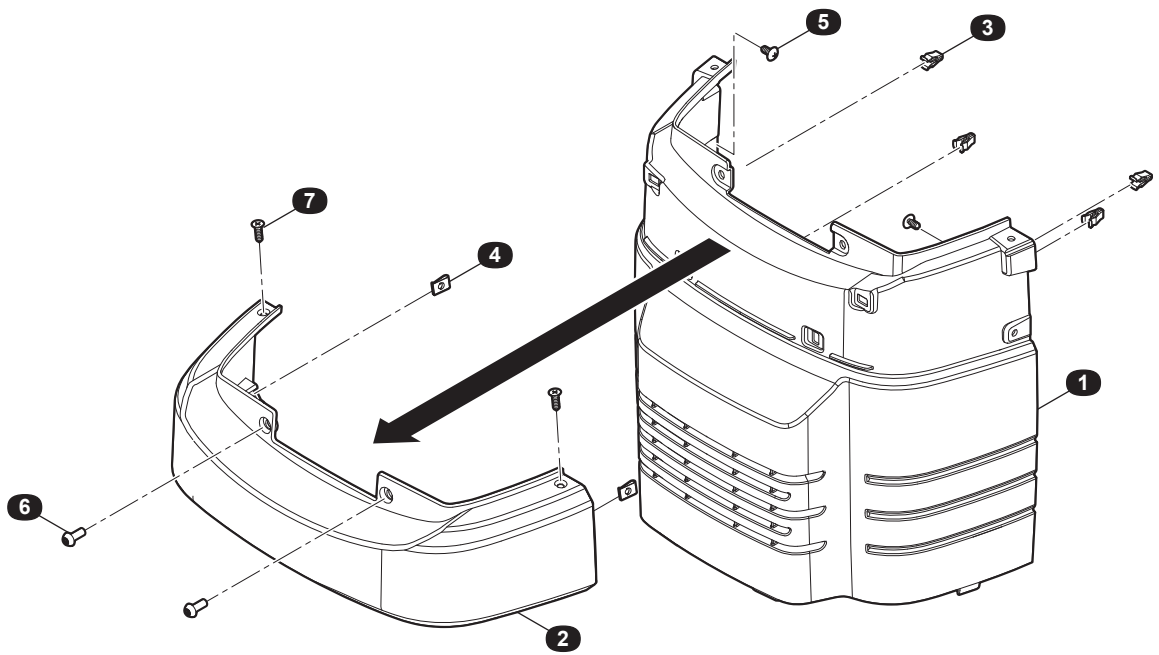
COVER ASSY-MAIN FASCIA,LH/RH



NO	PART NO.	PART NAME (Kr)	PART NAME (En)	Qt'y	REMARKS
1	2A72431000	커버-메인 패시아,LH	COVER-MAIN FASCIA,LH	1	
2	S311050000	U-너트 (Ø5 탭핑 스크류)	U-NUT (Ø5 TAPPING SCREW)	8	
3	2A72900000	엠블럼 앳세이-사이드	EMBLEM ASSY-SIDE	2	
4	Q215B0616T1F31	톡스 볼트 (M6X16)	BOLT-TORX (M6X16)	12	
5	2A72441000	커버-메인 패시아,RH	COVER-MAIN FASCIA,RH	1	
6	2A72321000IV	몰딩 앳세이-메인 패시아,LH 아이보리	MOLDING ASSY-MAIN FASCIA,LH IVORY	1	
	2A72321000YL	몰딩 앳세이-메인 패시아,LH 옐로우	MOLDING ASSY-MAIN FASCIA,LH YELLOW	1	
	2A72321000RD	몰딩 앳세이-메인 패시아,LH 레드	MOLDING ASSY-MAIN FASCIA,LH RED	1	
7	S621150080	클립-A	CLIP-A	20	
8	Q2744819F31	플랫 헤드 스크류 (ST4.8X19L)	FLAT HEAD SCREW (ST4.8X19L)	2	
9	2A72331000IV	몰딩 앳세이-메인 패시아,RH 아이보리	MOLDING ASSY-MAIN FASCIA,RH IVORY	1	
	2A72331000YL	몰딩 앳세이-메인 패시아,RH 옐로우	MOLDING ASSY-MAIN FASCIA,RH YELLOW	1	
	2A72331000RD	몰딩 앳세이-메인 패시아,RH 레드	MOLDING ASSY-MAIN FASCIA,RH RED	1	
10	2A72442000	커버-에어 가이드,RH	COVER-AIR GUIDE,RH	1	
11	2A72432000	커버-에어 가이드,LH	COVER-AIR GUIDE,LH	1	
12	Q2734813F62	탭핑 스크류 (ST4.8X13L)	TAPPING SCREW (ST4.8X13L)	8	

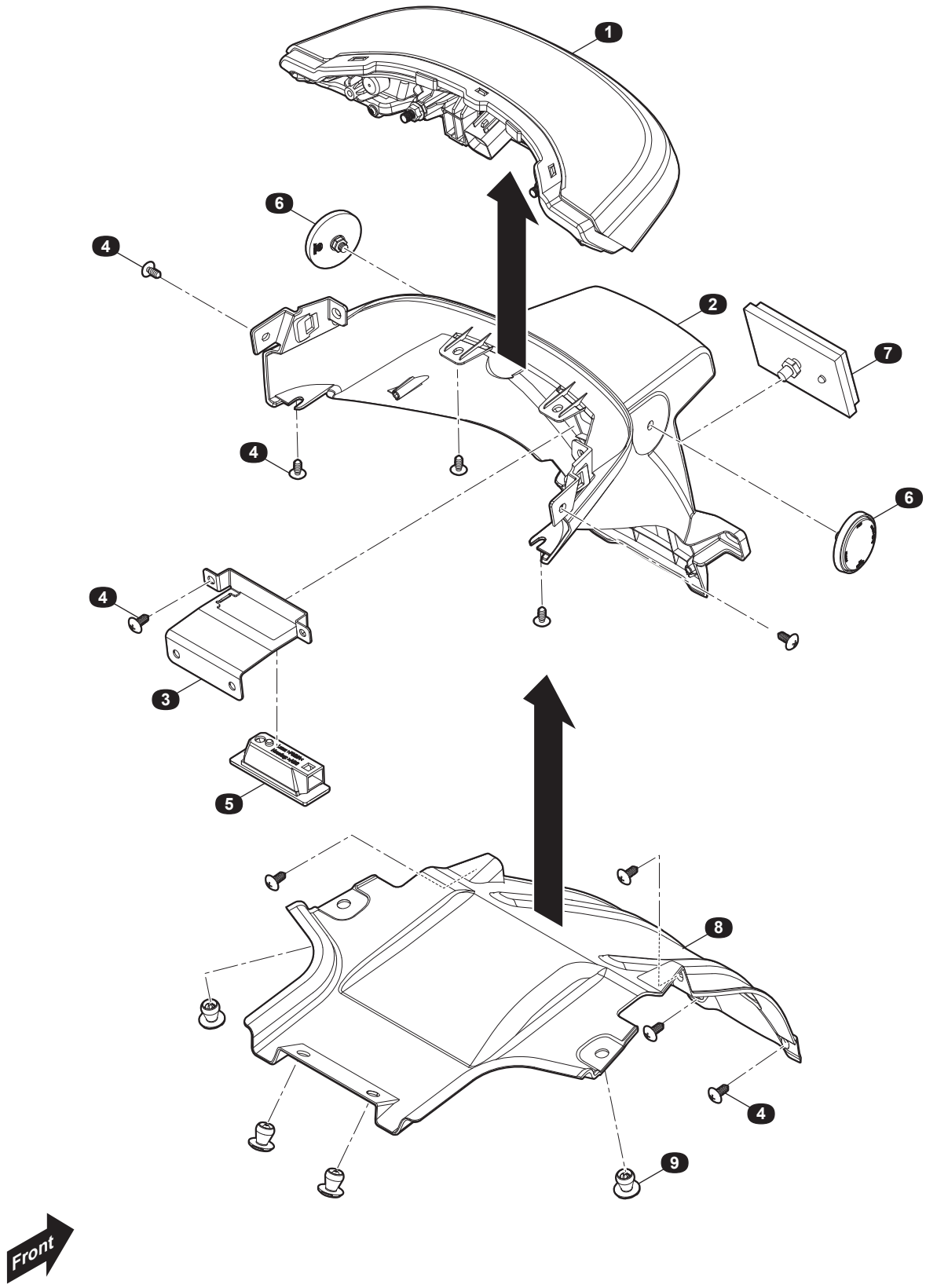
EXTERIOR

COVER ASSY-MAIN FASCIA,CTR



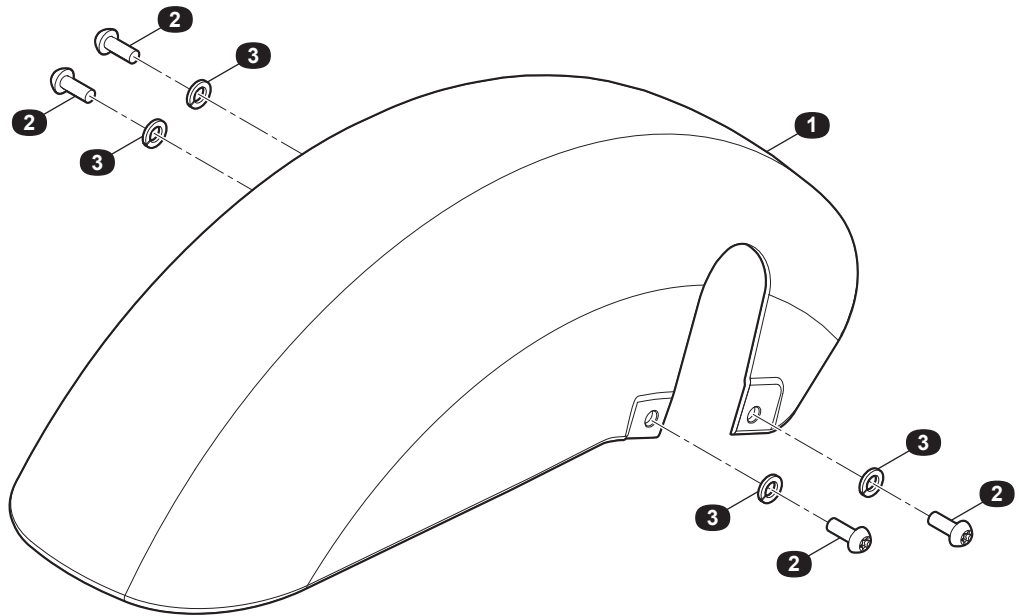
EXTERIOR

MODULE ASSY-RR END



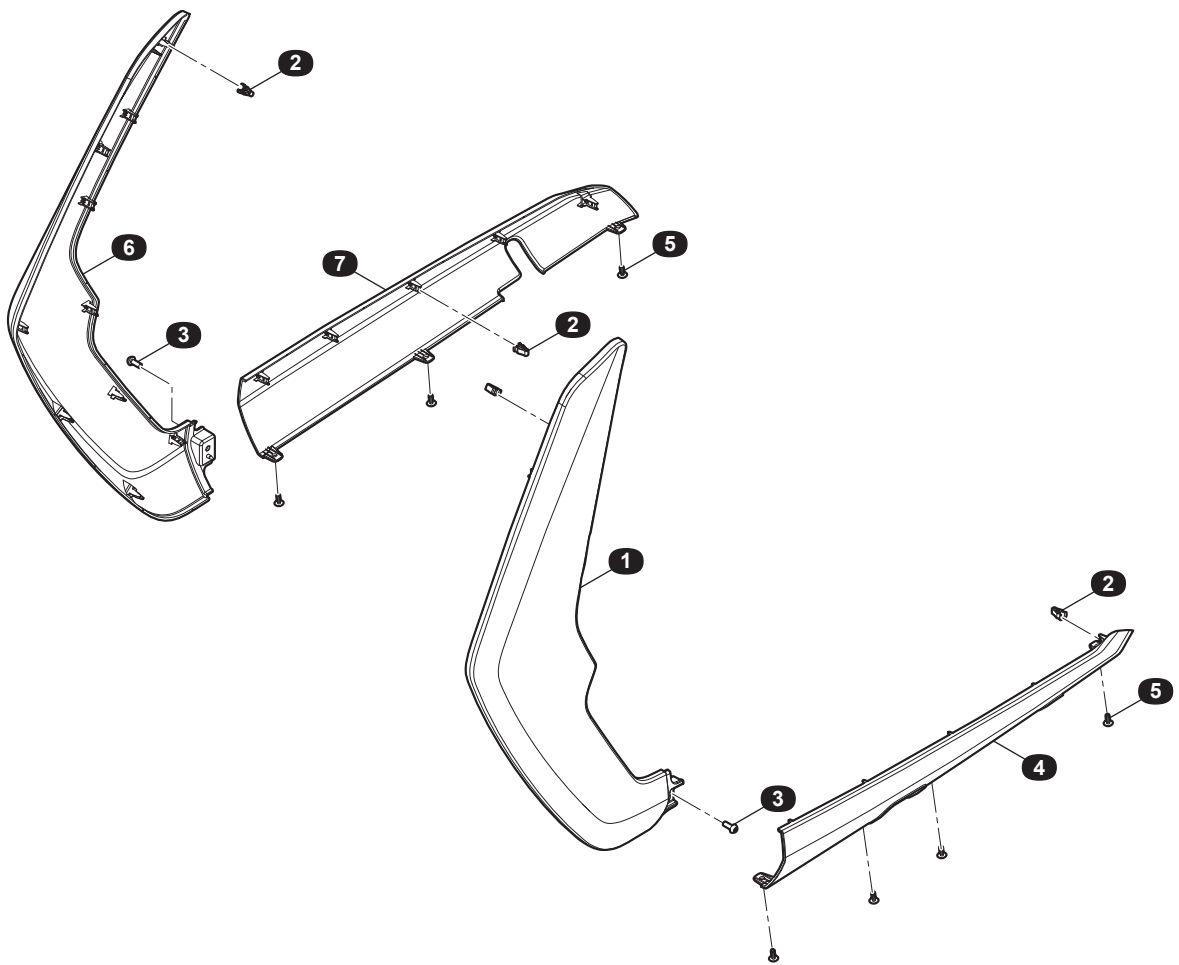
EXTERIOR

GUARD-FR RR WHEEL



EXTERIOR

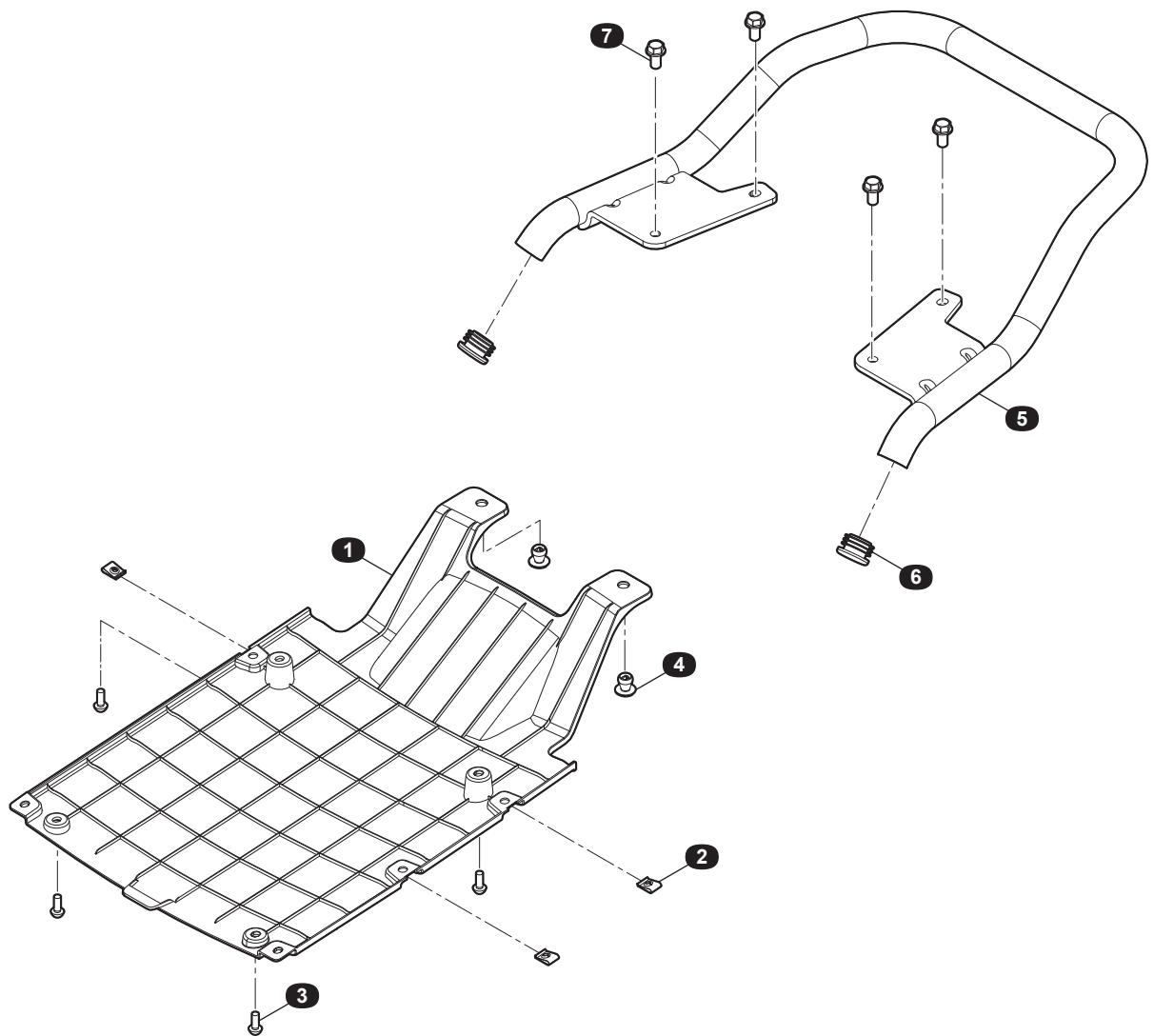
MOLDING ASSY-FENDER FLOOR



NO	PART NO.	PART NAME (Kr)	PART NAME (En)	Qt'y	REMARKS
1	2A72341000IV	몰딩-휨더,LH 아이보리	MOLDING-FENDER,LH IVORY	1	
	2A72341000YL	몰딩-휨더,LH 옐로우	MOLDING-FENDER,LH YELLOW	1	
	2A72341000RD	몰딩-휨더,LH 레드	MOLDING-FENDER,LH RED	1	
2	S621150080	클립-A	CLIP-A	32	
3	Q215B0616T1F31	톡스 볼트 (M6X16)	BOLT-TORX (M6X16)	2	
4	2A72351000IV	몰딩-플로어,LH 아이보리	MOLDING-FLOOR,LH IVORY	1	
	2A72351000YL	몰딩-플로어,LH 옐로우	MOLDING-FLOOR,LH YELLOW	1	
	2A72351000RD	몰딩-플로어,LH 레드	MOLDING-FLOOR,LH RED	1	
5	Q2734816F62	탭핑 스크류 (ST4.8X16L)	TAPPING SCREW (ST4.8X16L)	7	
6	2A72361000IV	몰딩-휨더,RH 아이보리	MOLDING-FENDER,RH IVORY	1	
	2A72361000YL	몰딩-휨더,RH 옐로우	MOLDING-FENDER,RH YELLOW	1	
	2A72361000RD	몰딩-휨더,RH 레드	MOLDING-FENDER,RH RED	1	
7	2A72371000IV	몰딩-플로어,RH 아이보리	MOLDING-FLOOR,RH IVORY	1	
	2A72371000YL	몰딩-플로어,RH 옐로우	MOLDING-FLOOR,RH YELLOW	1	
	2A72371000RD	몰딩-플로어,RH 레드	MOLDING-FLOOR,RH RED	1	

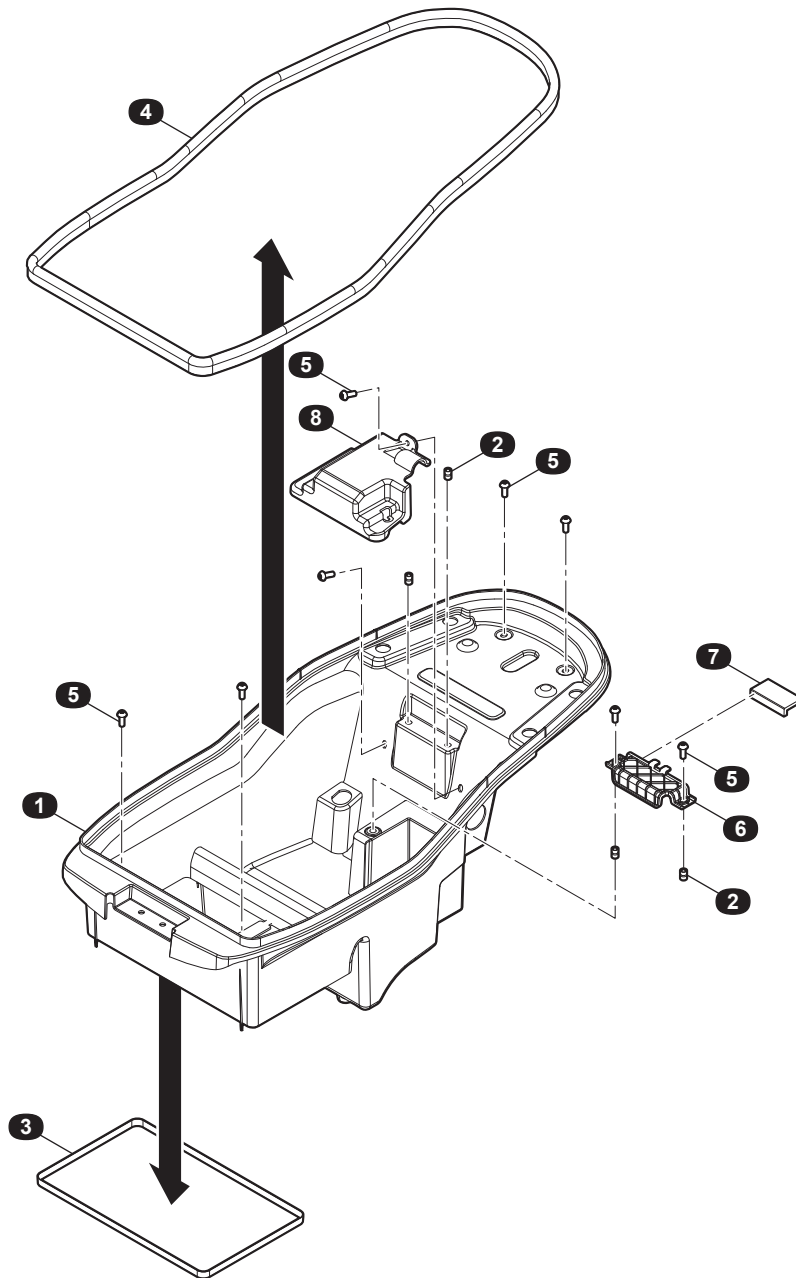
EXTERIOR

COVER ASSY-CTR UNDER



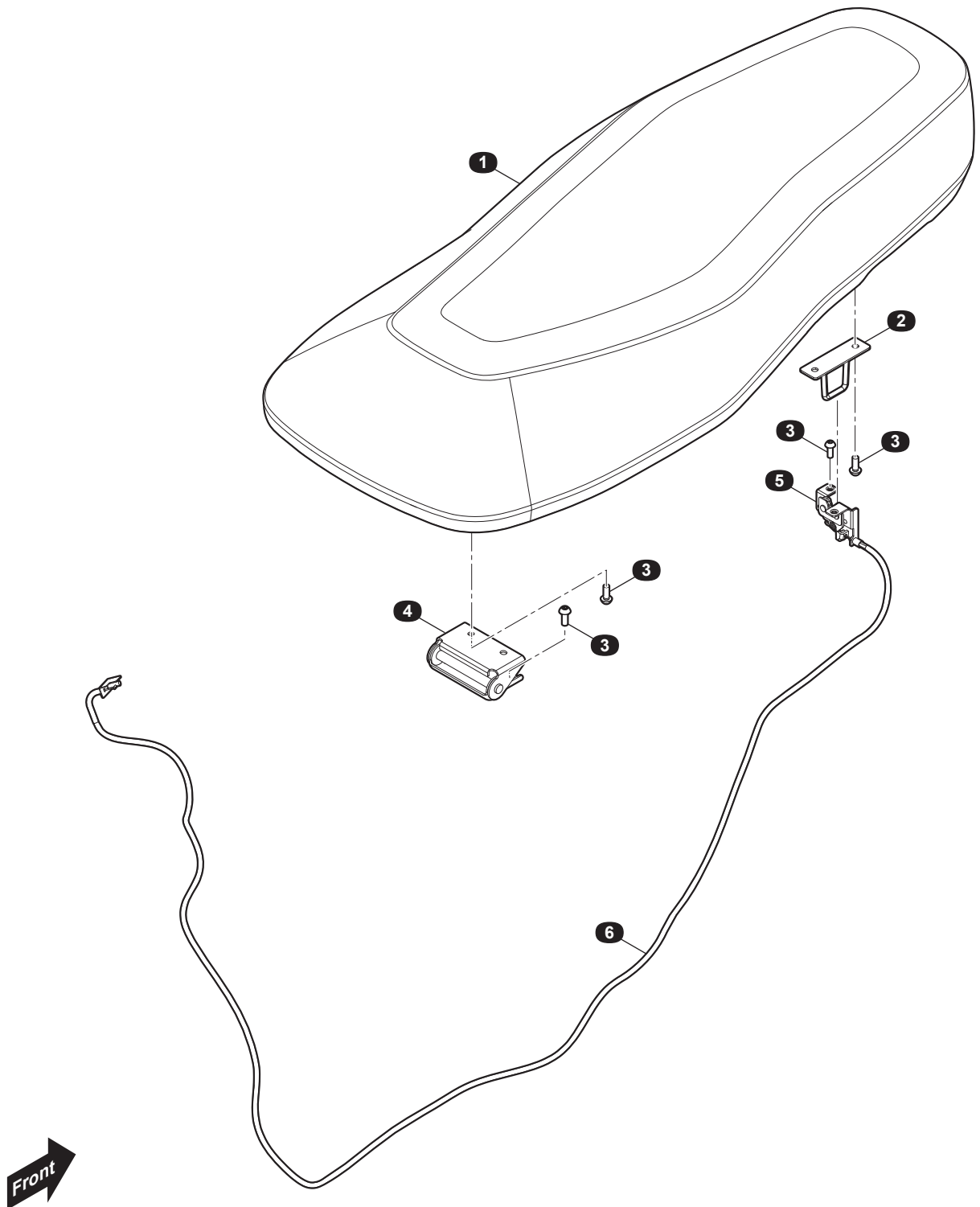
EXTERIOR

COVER ASSY-TRAY BOX (STD)



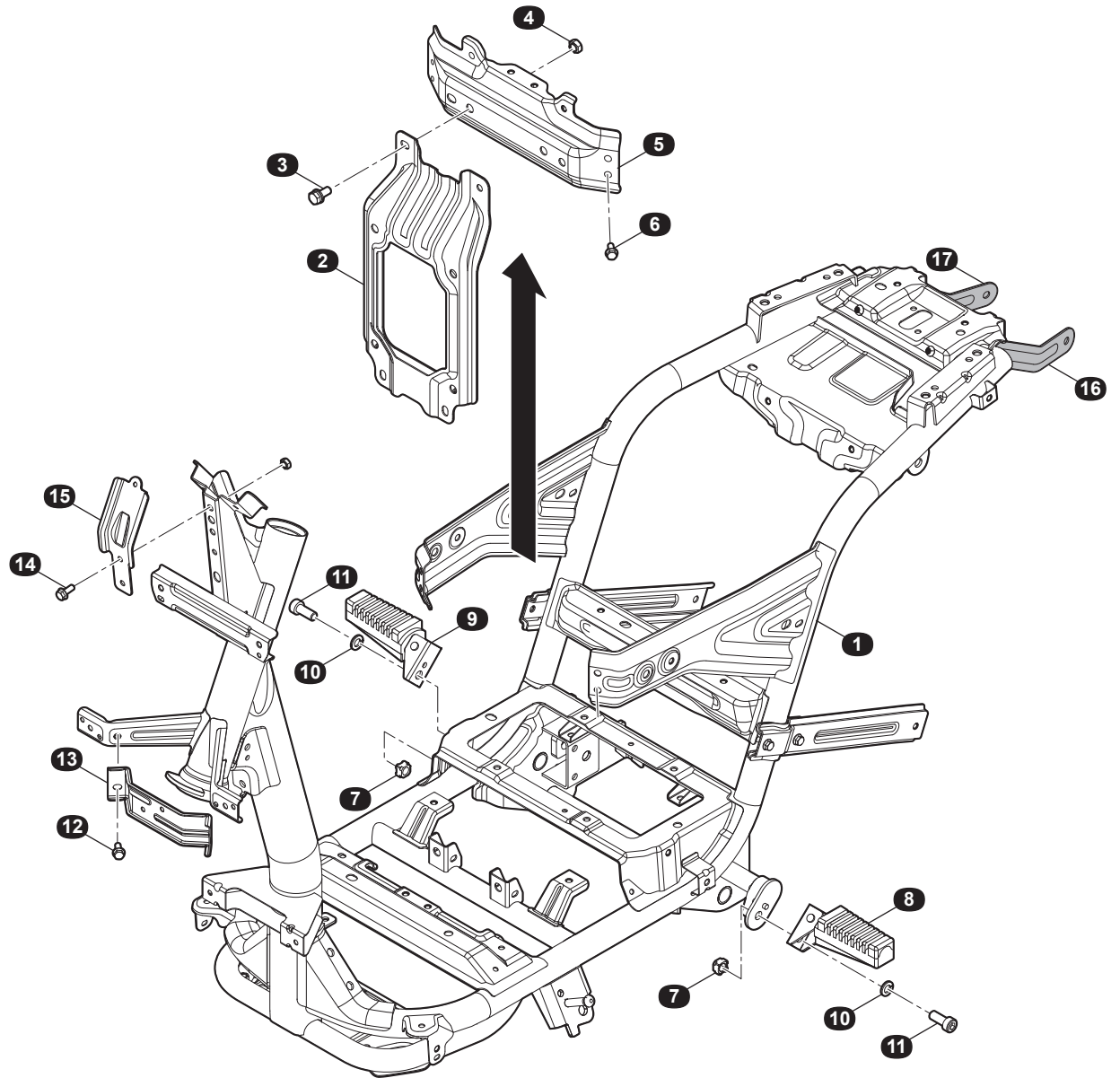
EXTERIOR

SEAT ASSY-COMPL



PLATFORM

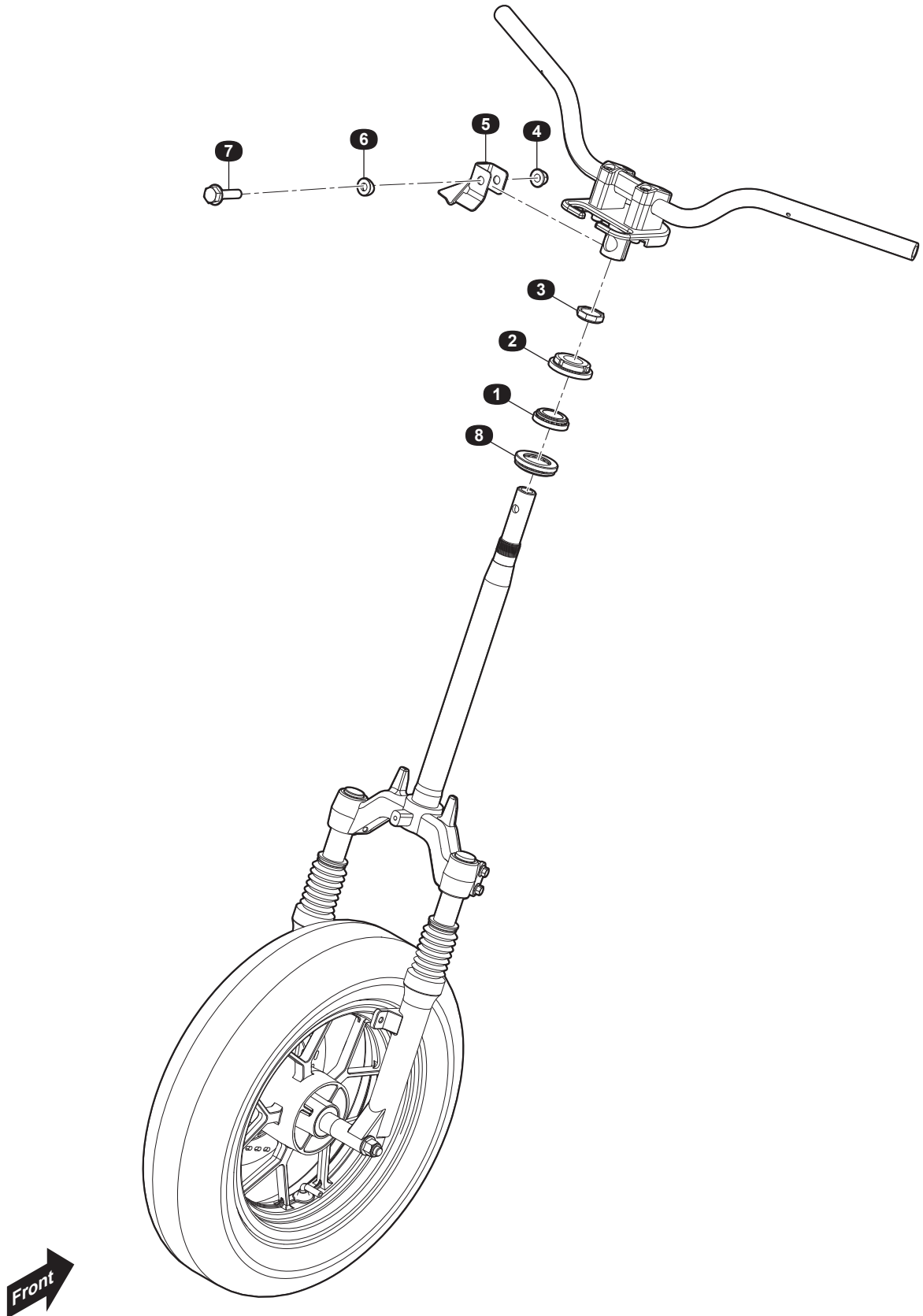
MAIN BODY



NO	PART NO.	PART NAME (Kr)	PART NAME (En)	Qt'y	REMARKS
1	2A53000001	바디 캄플	BODY COMPL	1	
2	2A56001210	3KW MCU MTG 브라켓	BRKT-3KW MCU MTG	1	
3	Q1420830F61	헥스 헤드 볼트 & 스프링 와셔 앳세이 (M8*30)	HEX HEAD BOLT & SPRING WASHER ASSY (M8*30)	4	
4	Q370D08F3	웰드 헥사곤 너트(M8)	NUT-WELD HEXAGON(M8)	4	
5	2A53245200	시트 FRT 브라켓	BRKT-SEAT FRT	1	
6	Q1820616TF62	헥사곤 플랜지 볼트 (M6X16)	BOLT-HEXAGON FLANGE (M6X16)	4	
7	Q371B10F3	웰드 너트 (M10)	NUT-WELD (M10)	2	
8	M128341000	RR 사이드 스텝 앳세이 -LH	RR SIDE STEP ASSY-LH	1	
9	M128341000A	RR 사이드 스텝 앳세이 -RH	RR SIDE STEP ASSY-RH	1	
10	Q40310F61	스프링 와셔 (10)	SPRING WASHER (10)	2	
11	Q218B1025	헥스 소켓 헤드 캡 볼트 (M10X25)	HEX SOCKET HEAD CAP BOLT (M10X25)	2	
12	Q150B0610T21F31	헥사곤 헤드 볼트 (M6X10)	BOLT-HEXAGON HEAD (M6X10)	2	
13	2A56003100	CBS MTG 브라켓	BRKT-CBS MTG	1	
14	Q1820616TF62	헥사곤 플랜지 볼트 (M6X16)	BOLT-HEXAGON FLANGE (M6X16)	2	
15	2A56004100	헤드 램프 레인프 UPR 브라켓	BRKT-HEAD LAMP REINF UPR	1	
16	2A72215000	가드 RR 머드 브라켓,LH	BRKT-GUARD RR MUD,LH	1	
17	2A72216000	가드 RR 머드 브라켓,RH	BRKT-GUARD RR MUD,RH	1	

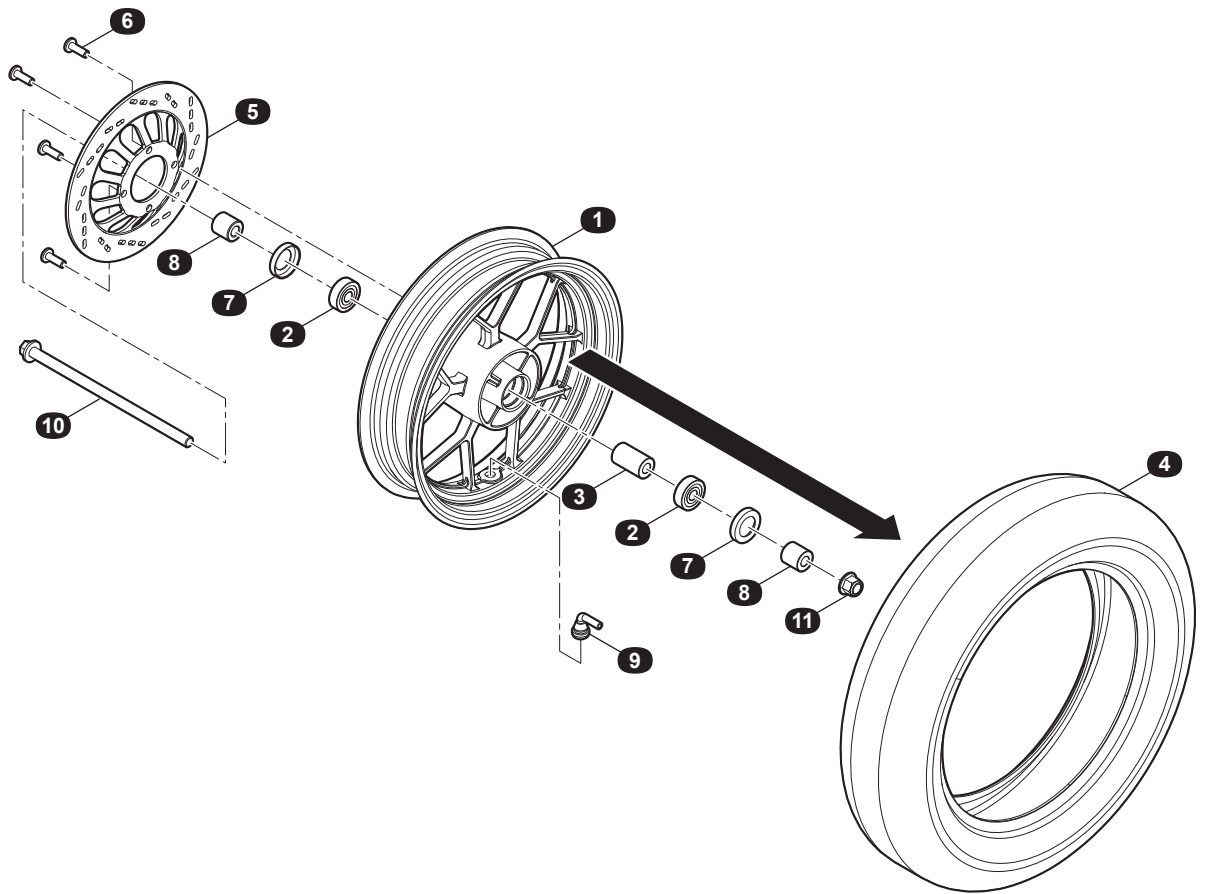
CHASSIS

FR SHOCK ASSY



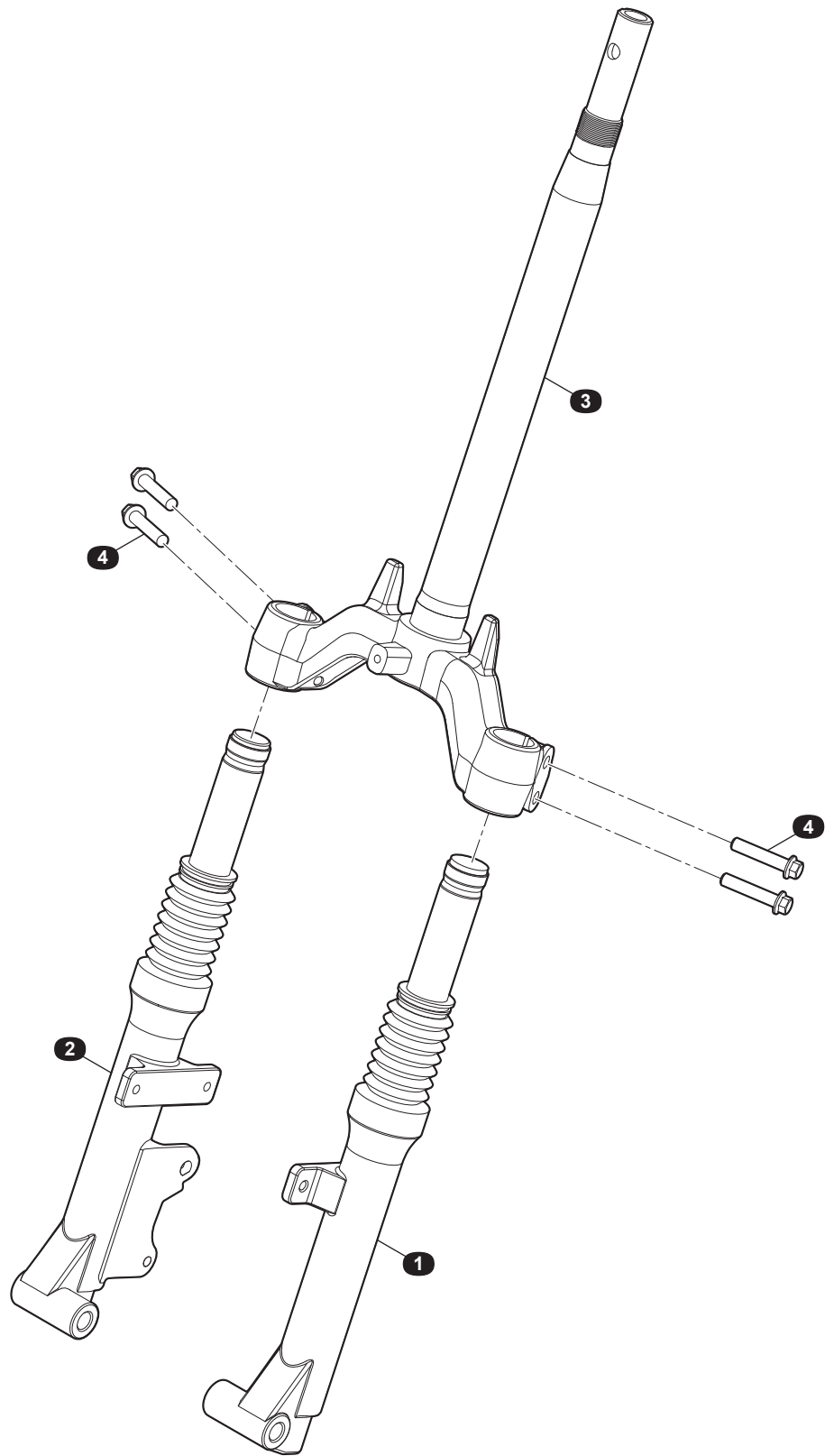
CHASSIS

FR AL WHEEL SUB ASSY



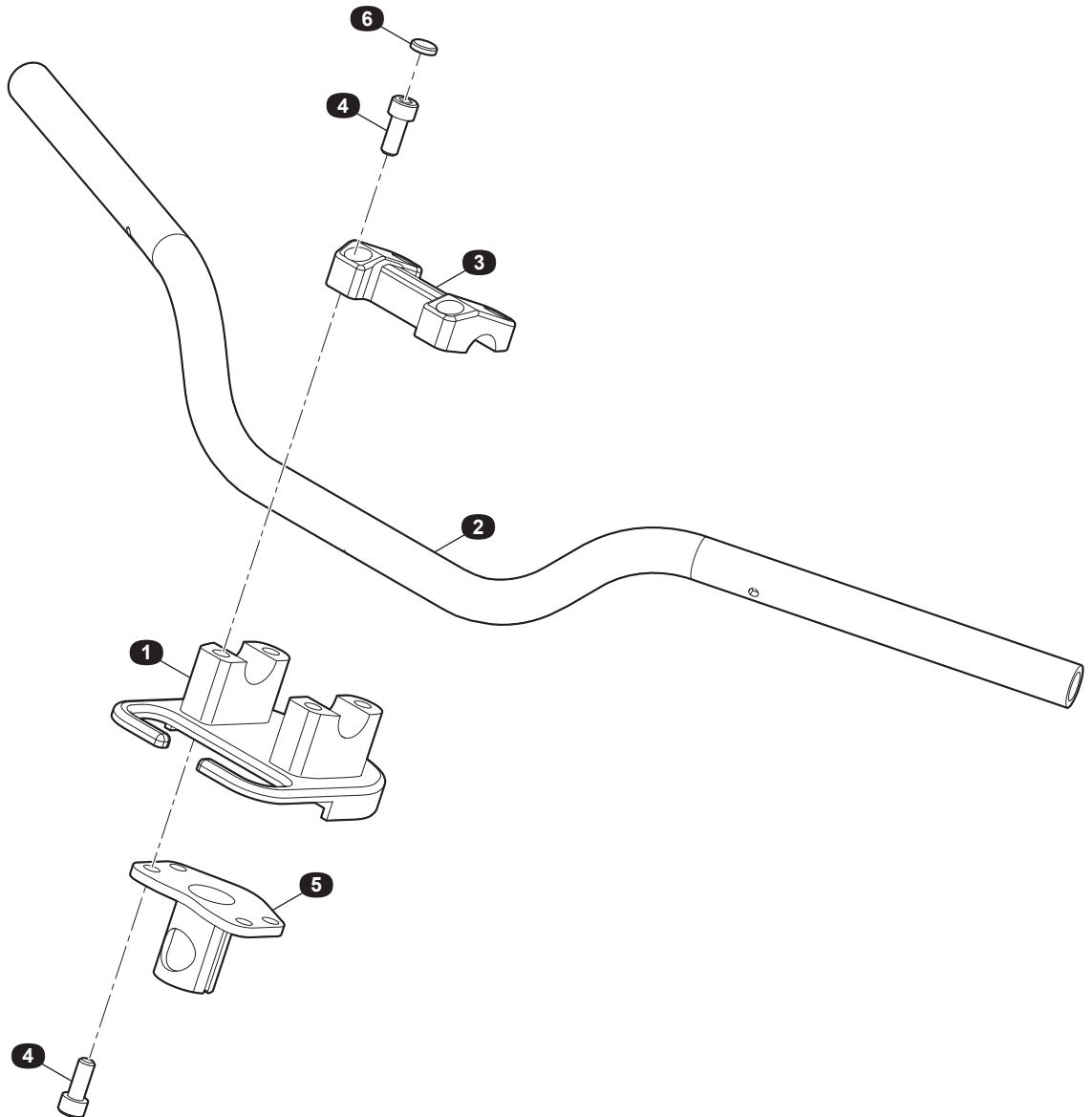
CHASSIS

FR SHOCK SUB ASSY



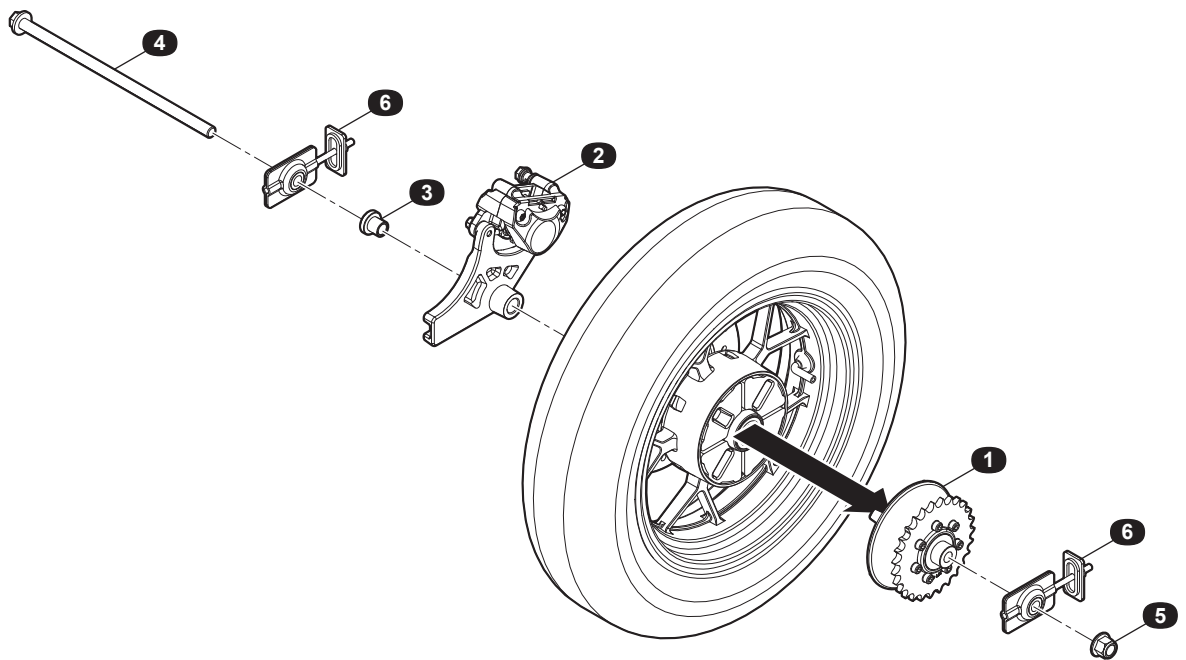
CHASSIS

HANDLE BAR SUB ASSY



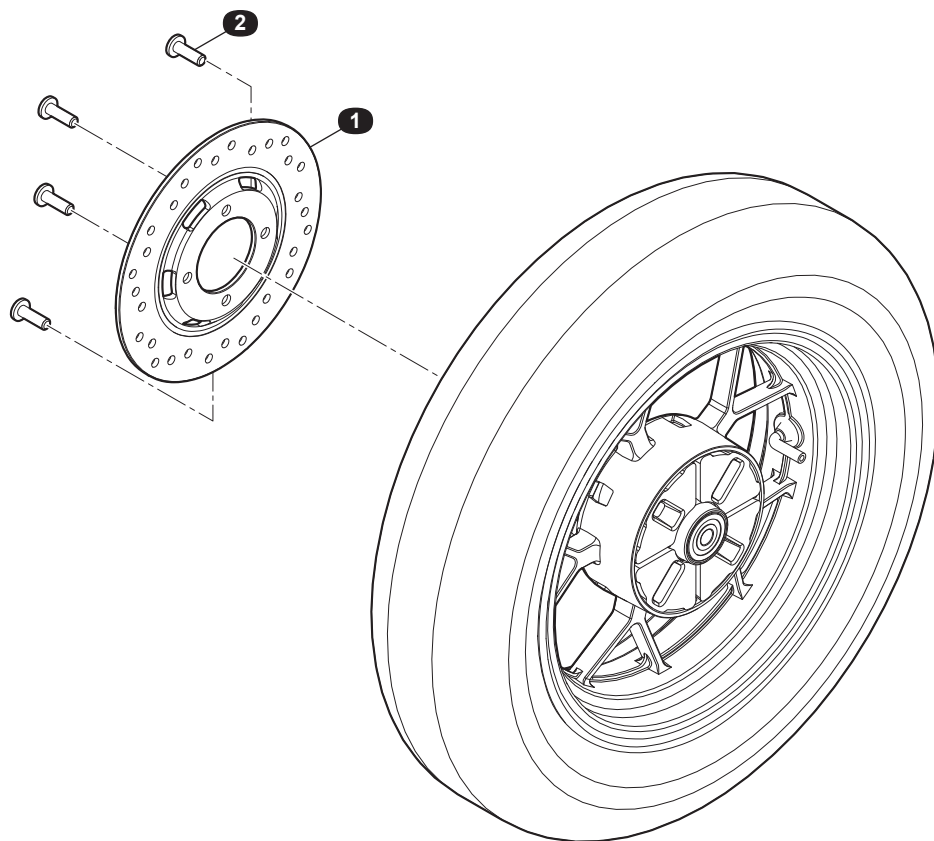
CHASSIS

RR WHEEL ASSY



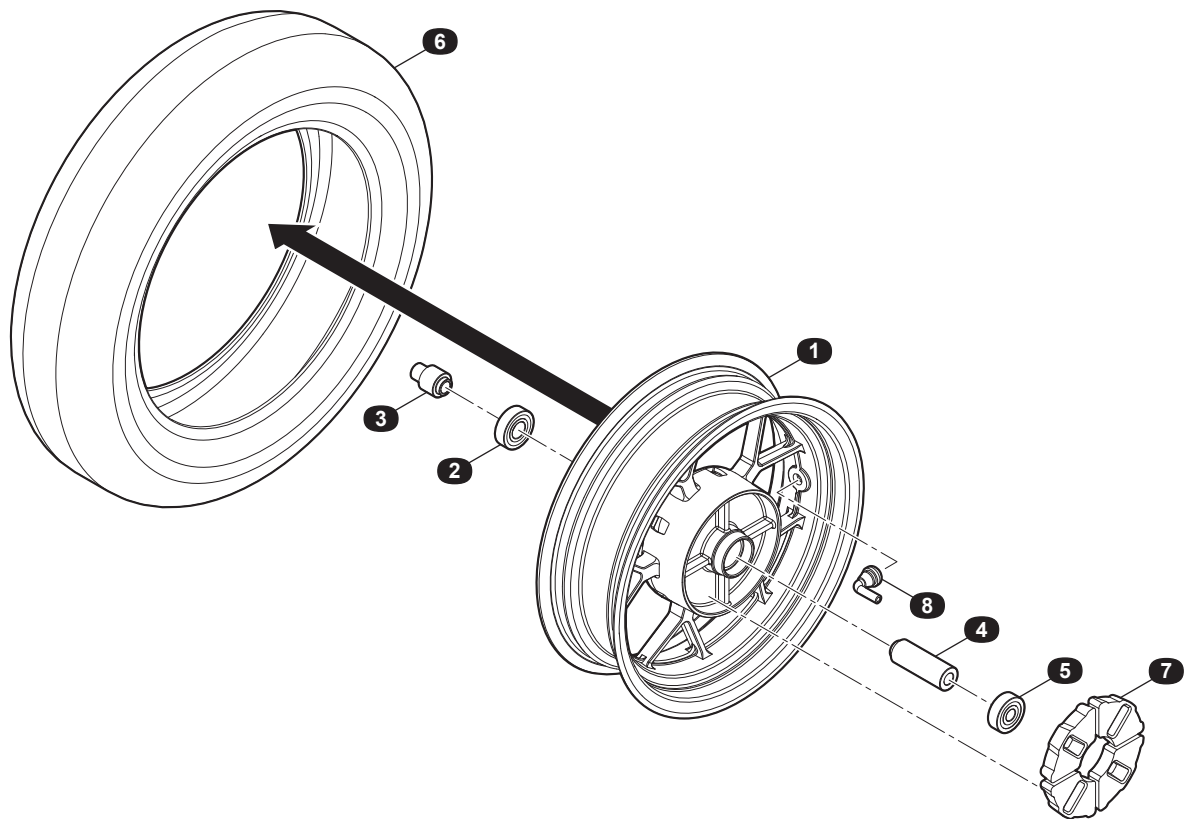
CHASSIS

RR WHEEL DISC SUB ASSY



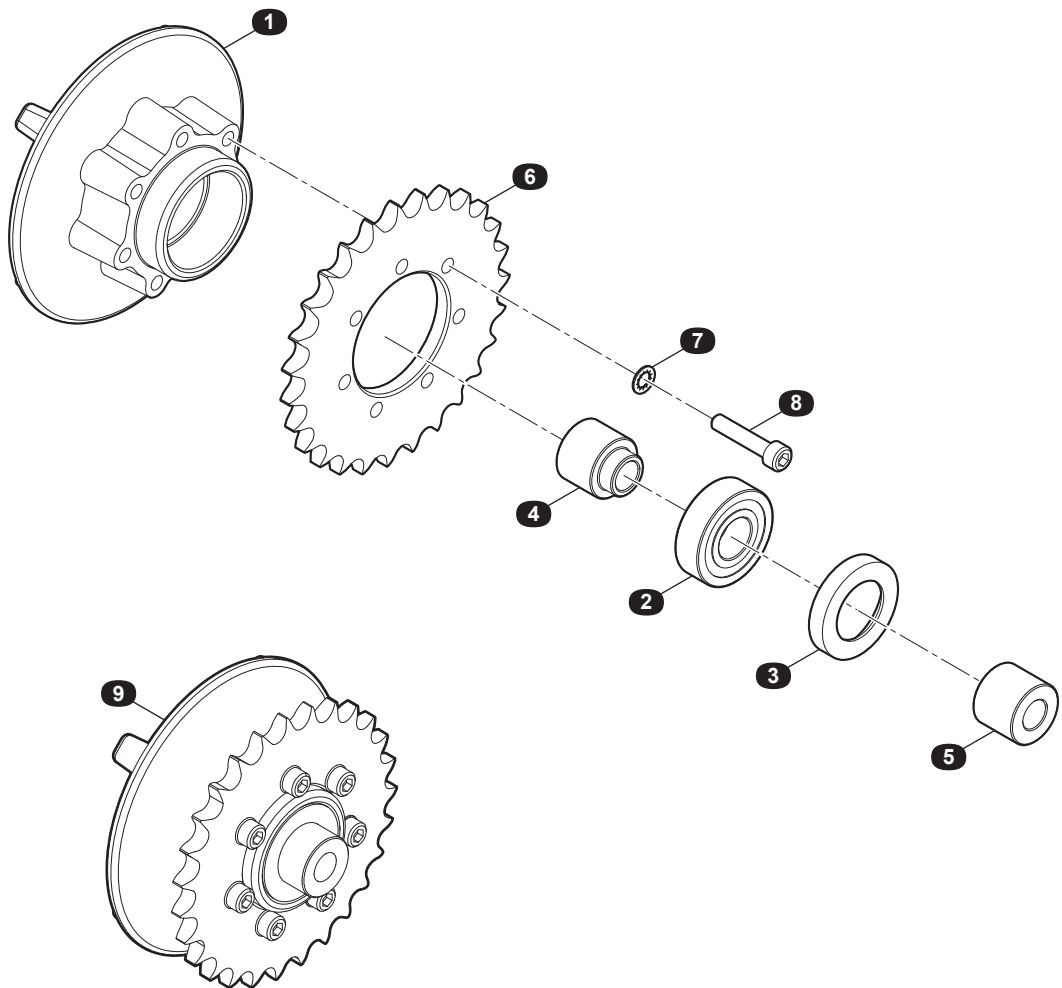
CHASSIS

RR AL WHEEL SUB ASSY



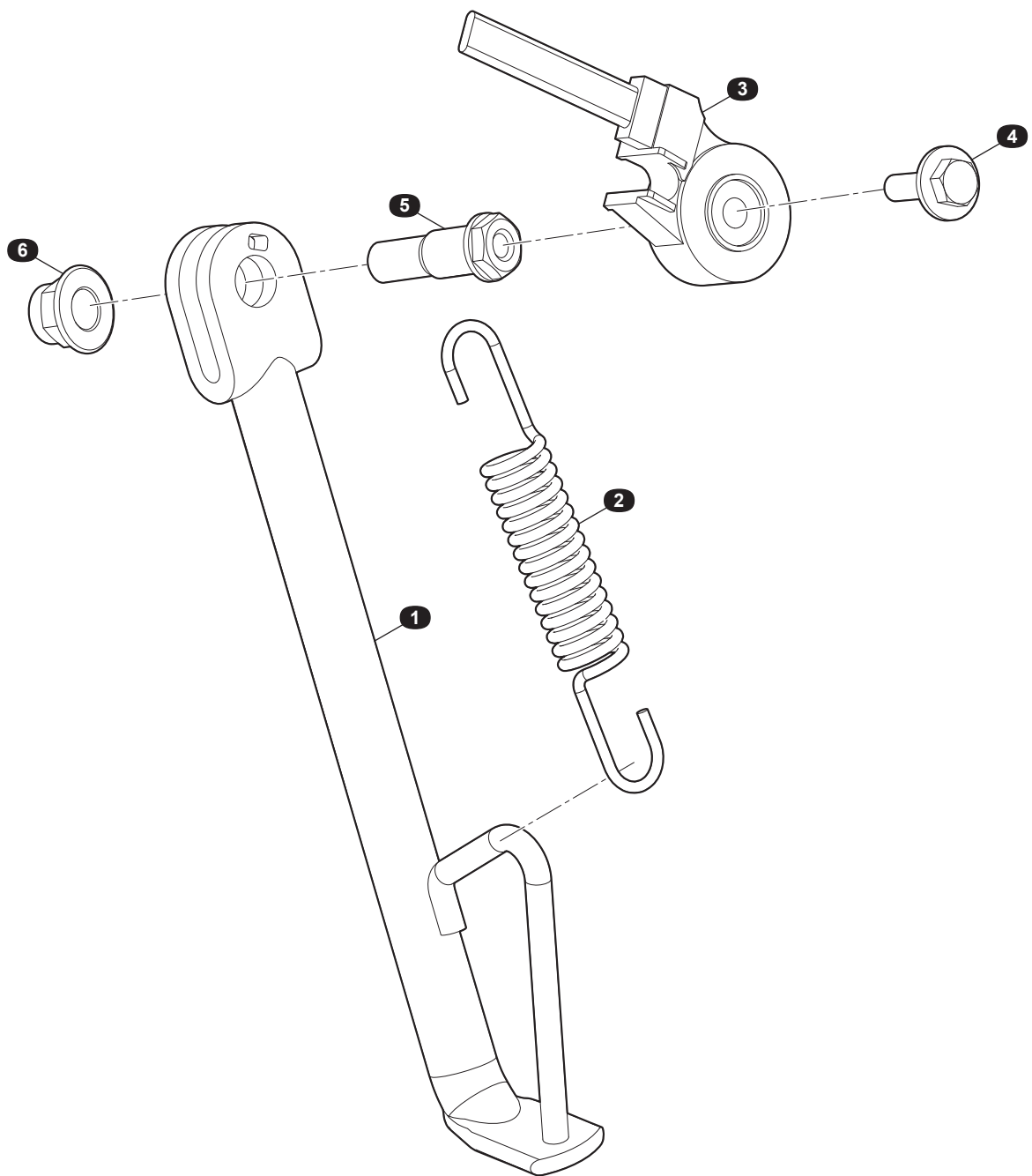
CHASSIS

RR SPROCKET SUB ASSY



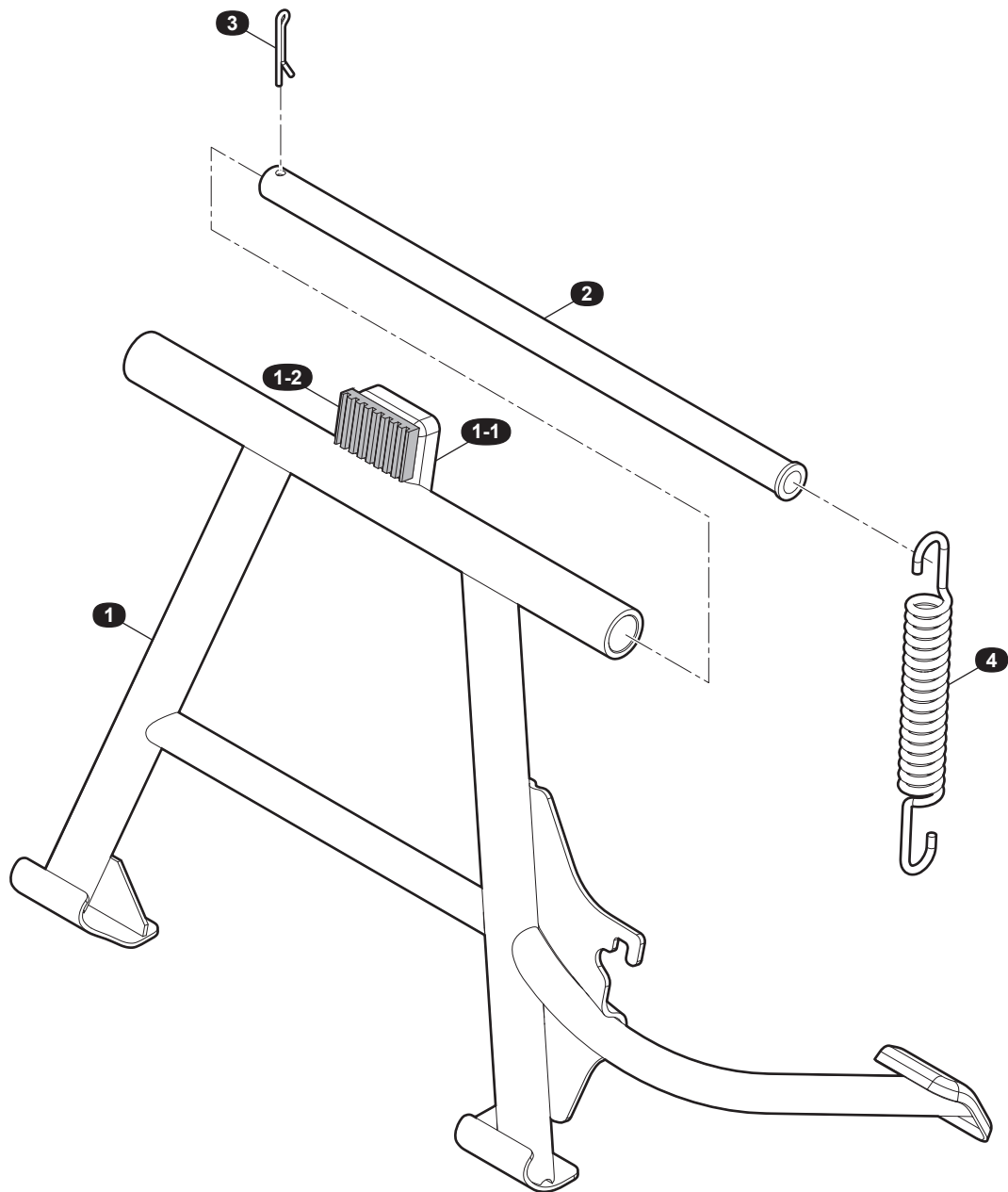
CHASSIS

SIDE STAND



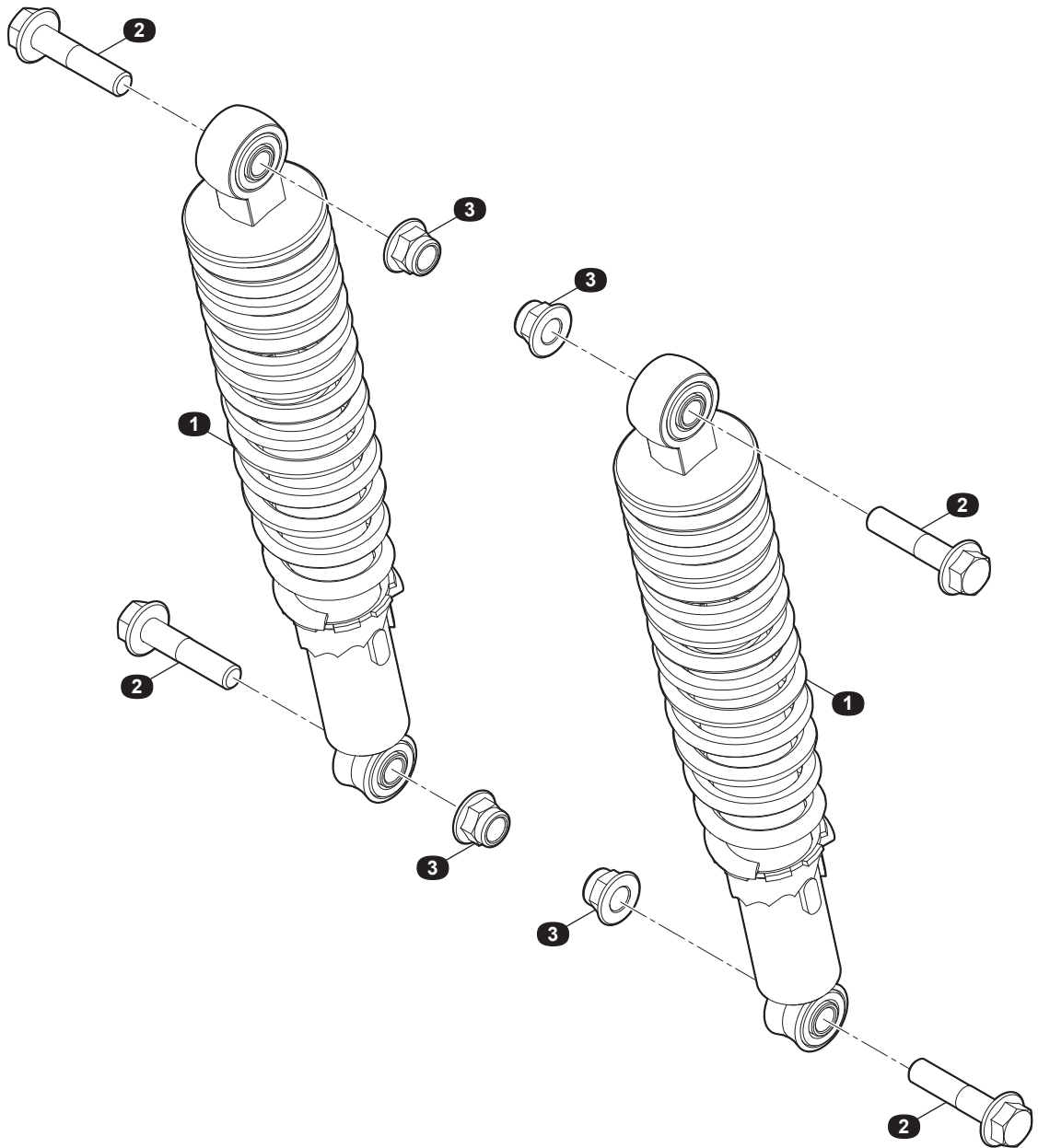
CHASSIS

MAIN STAND ASSY



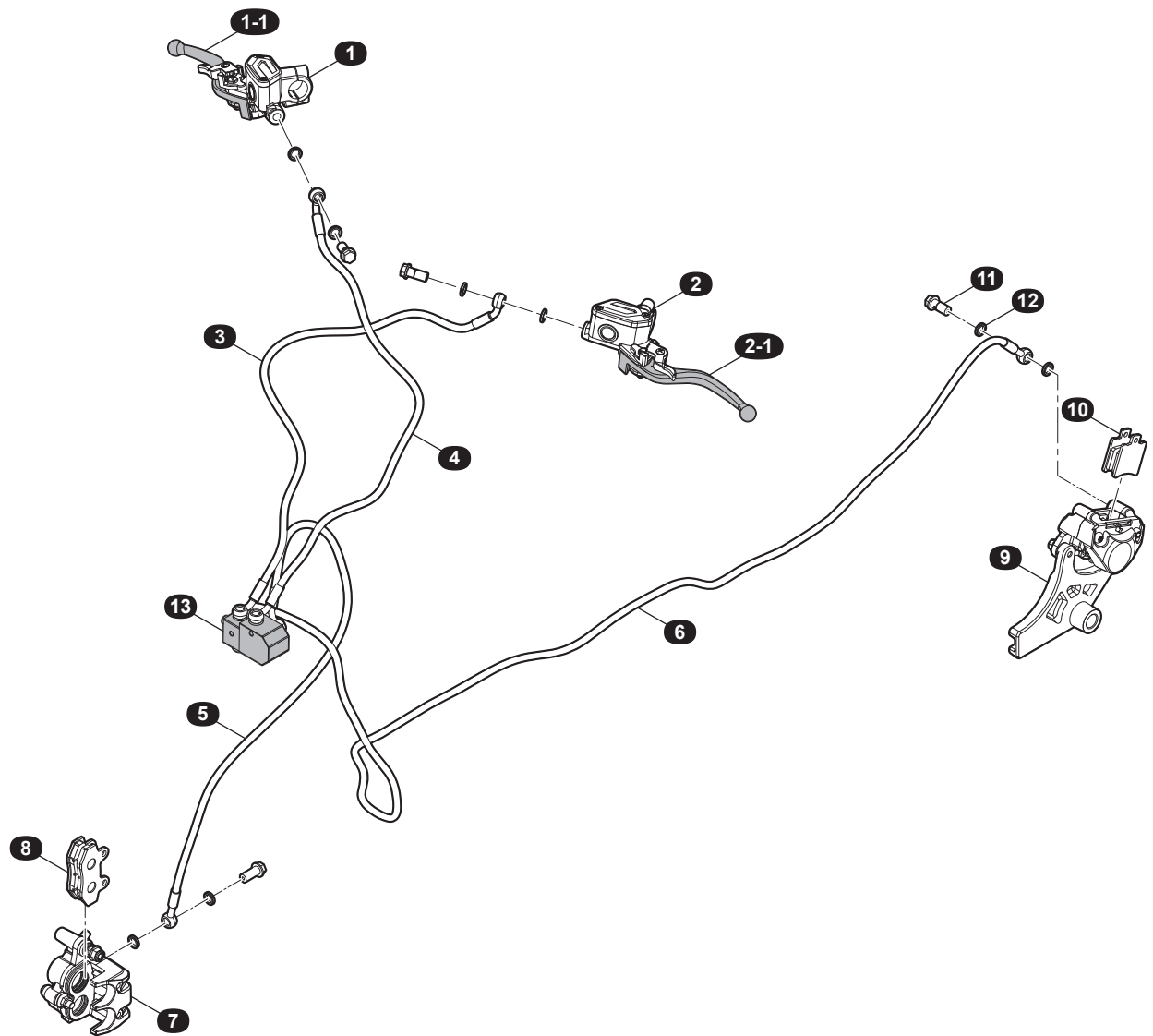
CHASSIS

RR SUSPENSION



CHASSIS

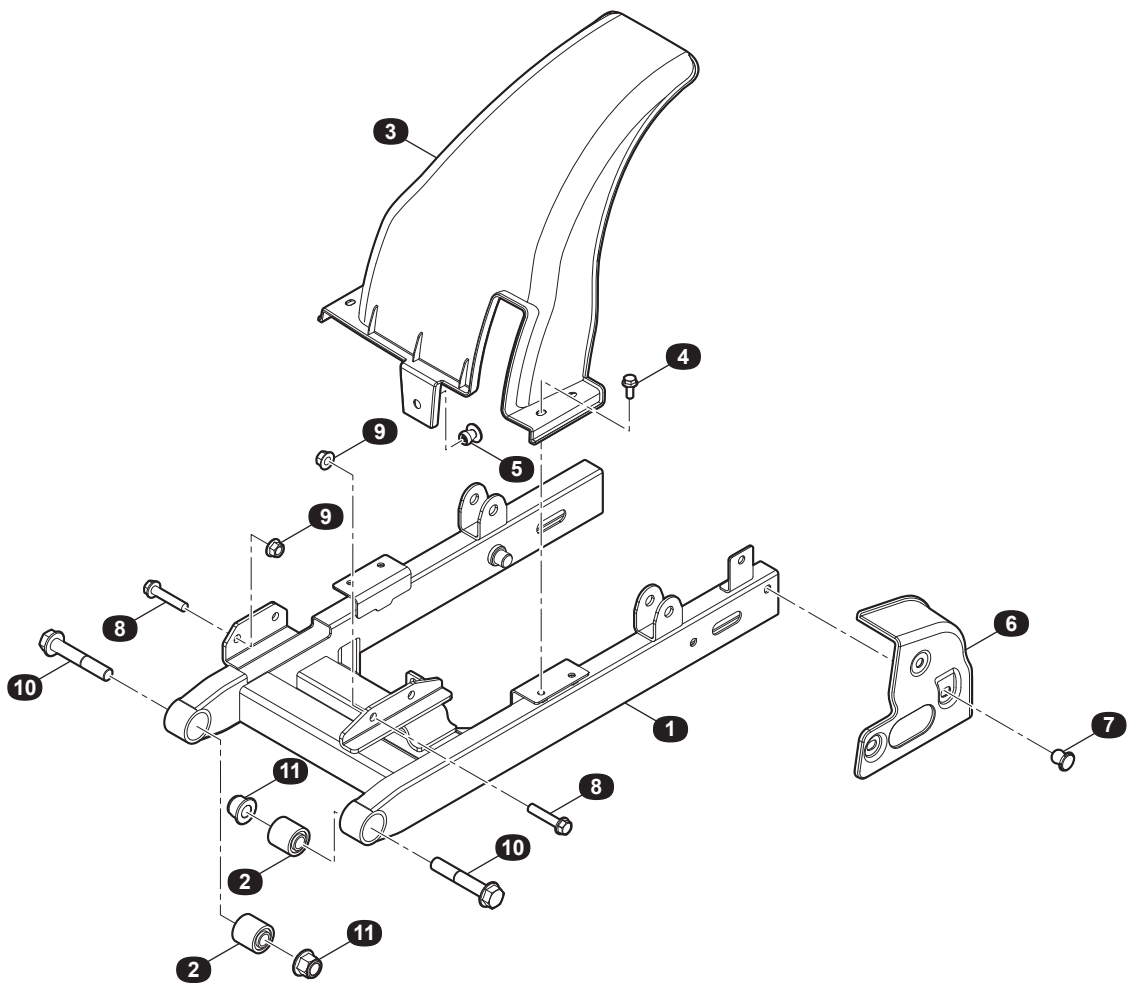
BRAKE CABLE



NO	PART NO.	PART NAME (Kr)	PART NAME (En)	Qt'y	REMARKS
1	M128175000	브레이크 레버 앓세이, LH	BRAKE LEVER ASSY, LH	1	
1-1	M128175000A	브레이크 레버, LH	BRAKE LEVER, LH	1	
2	M128176000	브레이크 레버 앓세이, RH	BRAKE LEVER ASSY, RH	1	
2-1	M128176000A	브레이크 레버, RH	BRAKE LEVER, RH	1	
3	2A28160000	브레이크 튜브	BRAKE TUBE	1	
4	2A28160000	브레이크 튜브	BRAKE TUBE	1	
5	2A28150000	브레이크 튜브, FR	BRAKE TUBE, FR	1	
6	2A28900000	브레이크 튜브, RR	BRAKE TUBE, RR	1	
7	2A28451000	FR 브레이크 캘리퍼 앓세이	FR BRAKE CALIPER ASSY	1	
8	M128171160	패드-FR 브레이크	PAD-FR BRAKE	2	
9	M128172000	RR 브레이크 캘리퍼 앓세이	RR BRAKE CALIPER ASSY	1	
10	M128172160	패드-RR 브레이크	PAD-RR BRAKE	2	
11	Q1800820TF61	볼트-헥사곤 헤드 플랜지 (M8X1.25X20)	BOLT-HEXAGON HEAD FLANGE (M8X1.25X20)	8	
12	S411010010	브레이크 호스 와셔 (10)	BRAKE HOSE WASHER (10)	16	
13	M128177000	씨비에스 프로포셔닝 밸브	CBS PROPORTIONING VALVE	1	

CHASSIS

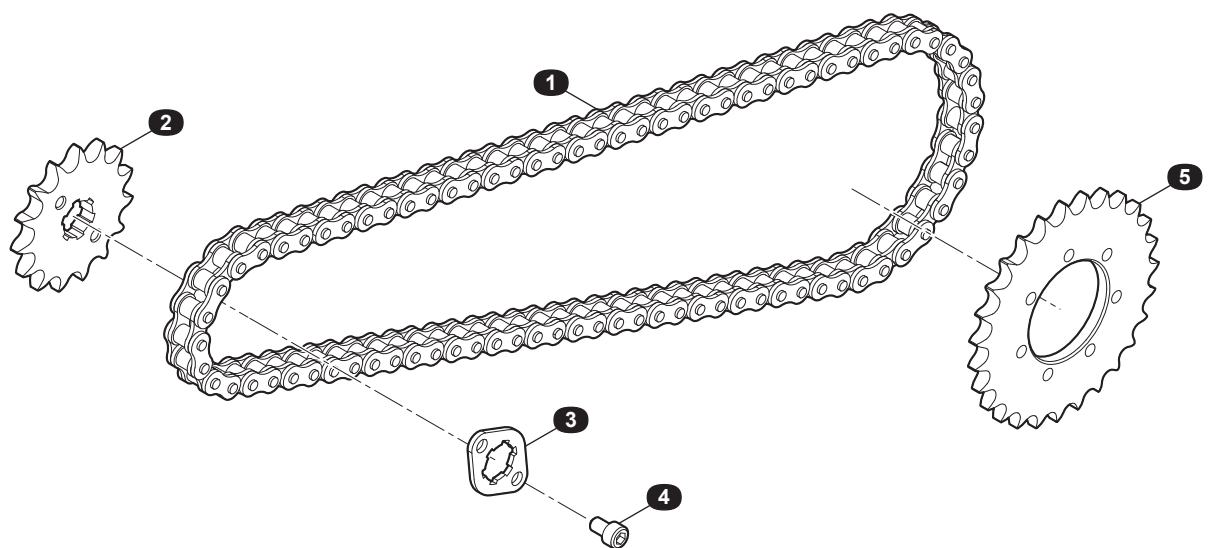
SWING ARM ASSY



NO	PART NO.	PART NAME (Kr)	PART NAME (En)	Qt'y	REMARKS
1	2A43111000	스윙 암 서브 왓세이	SWING ARM SUB ASSY	1	
2	M143111300	브러쉬-RR 스윙 암	BUSH-RR SWING ARM	2	
3	2A72600000	가드-RR 휠	GUARD-RR WHEEL	1	
4	Q1820616TF62	볼트-헥사곤 플랜지 (M6X16)	BOLT-HEXAGON FLANGE (M6X16)	4	
5	Q6920820	파스너 (Ø8.0)	FASTENER (Ø8.0)	1	
6	2A72700000	COVER-체인 가드	COVER-CHAIN GUARD	1	
7	Q6920820	파스너 (Ø8.0)	FASTENER (Ø8.0)	3	
8	Q1820840TF62	볼트-헥사곤 플랜지 (M8X40)	BOLT-HEXAGON FLANGE (M8X40)	4	
9	Q32008T14F62	너트-헥사곤 플랜지 (M8)	NUT-HEXAGON FLANGE (M8)	4	
10	Q1851270TF62	볼트-헥사곤 헤드 플랜지 (M12X1.25X70)	BOLT-HEXAGON HEAD FLANGE (M12X1.25X70)	2	
11	Q33912T13F61	플랜지 락 너트 (M12X1.25)	FLANGE LOCK NUT(M12X1.25)	2	

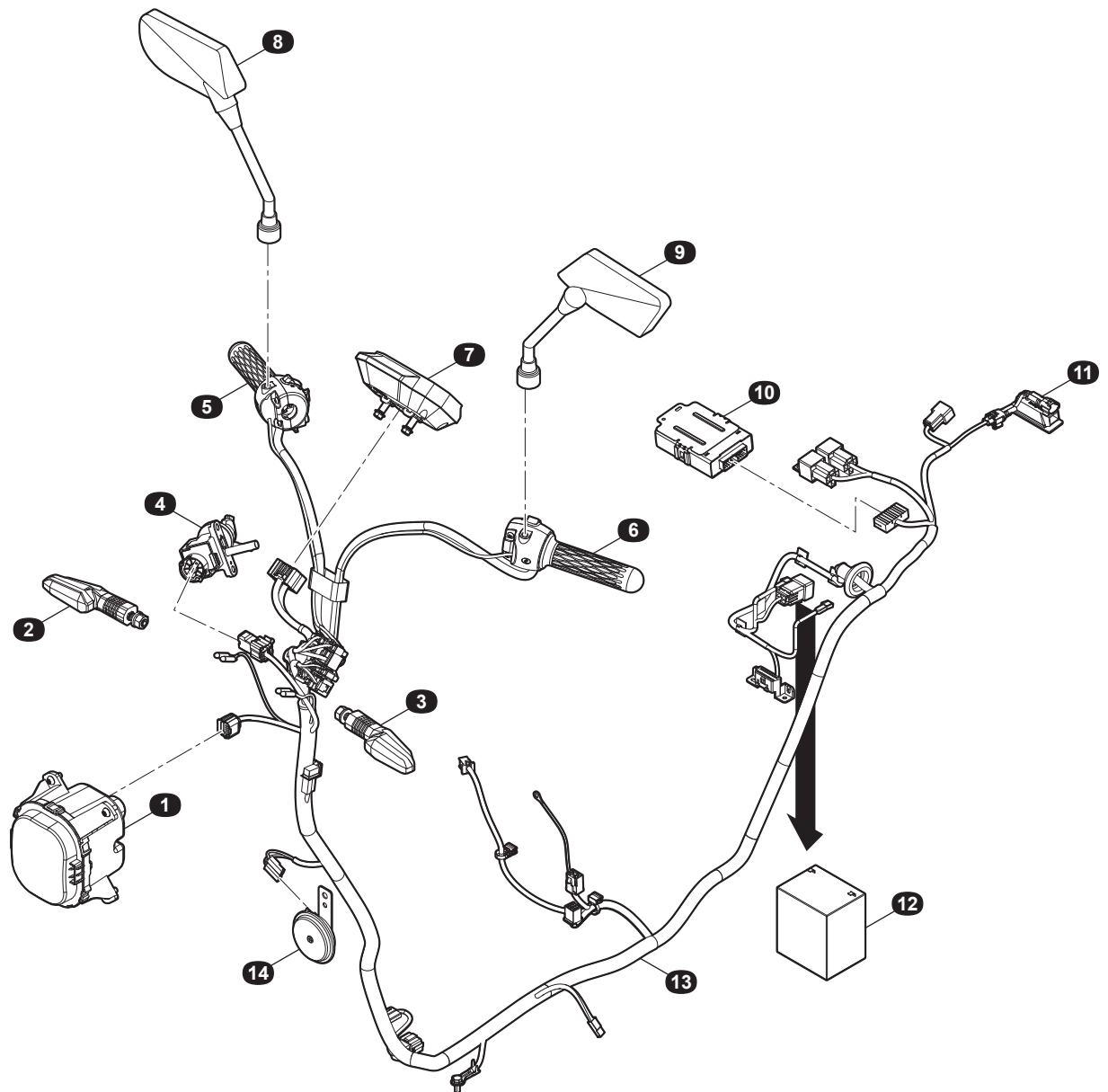
CHASSIS

CHAIN ASSY(15T_27T)

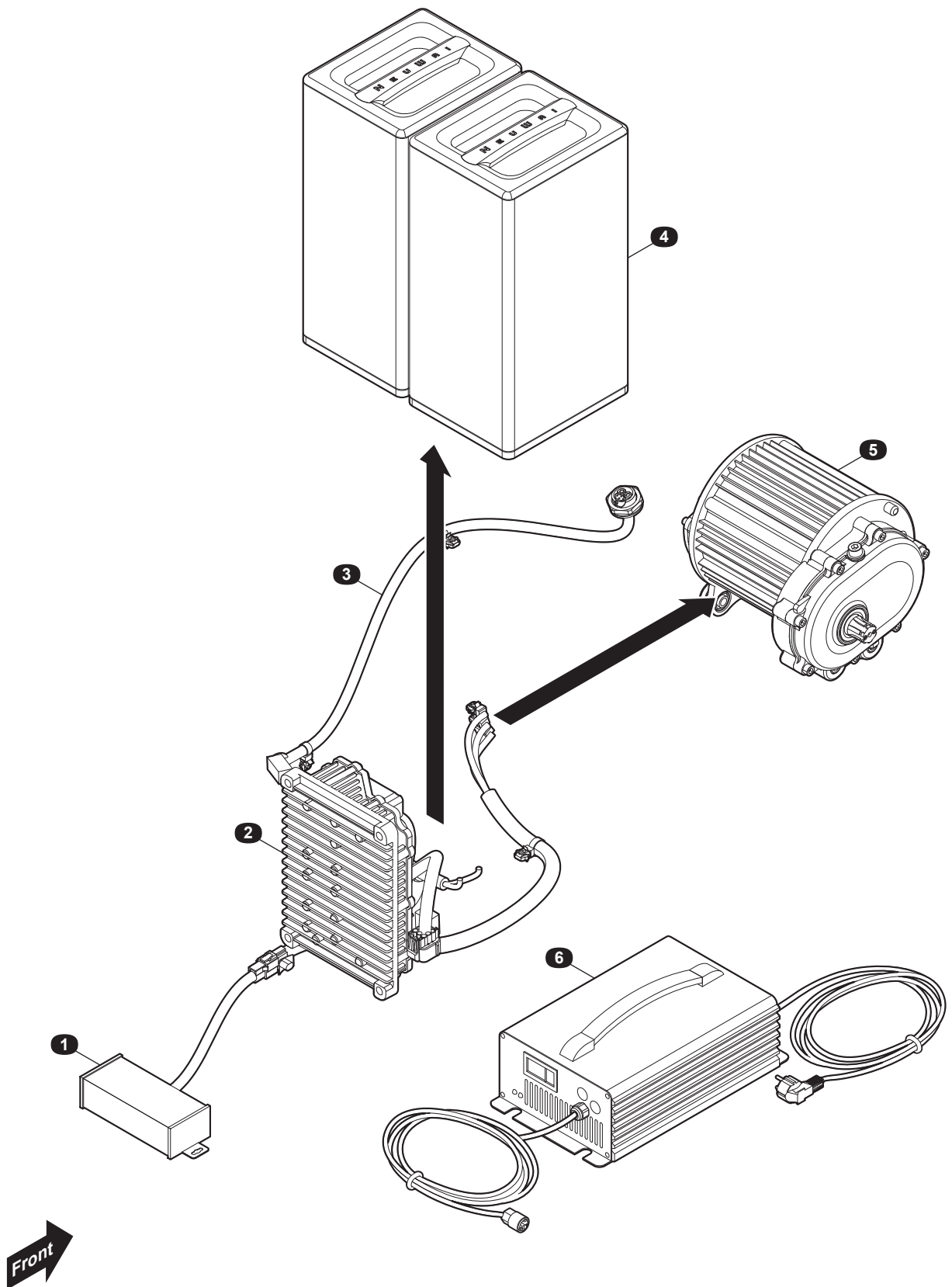


ELECTRIC ASSY

ELECTRIC ASSY



EPT DATA





송과모빌리티이노베이션 주식회사

주소: 경기도 평택시 포승읍 평택항로 156번길 82

서비스센터: +82-31-526-7950

이메일: service@neuwai.com

홈페이지: www.songuomi.com